



OTOMOTİV SANAYİİ DERNEĞİ
AUTOMOTIVE MANUFACTURERS ASSOCIATION

AYLIK RAPOR

Automotive Industry Monthly Report

Ekim / October 2012

- **Üretim/Production**
- **Satış/Sales**
- **İthalat/Imports**
- **İhracat/Exports**

OSD "OICA" Üyesidir



OSD is a Member of "OICA"



2012 Ekim Ayı Özeti / 2012 October Summary

KONULAR/MATTERS		AYLIK/MONTHLY			10 AY/ 10 MONTHS			YILLIK/YEARLY		
		2011	2012	2012/2011 (%)	2011	2012	2012/2011 (%)	2011	2012	2012/2011 (%)
Üretim/Production	Toplam/Total	103.946	90.673	-12,8	987.693	884.646	-10,4	1.189.120	1.086.084	-8,7
	Otomobil/P.Cars	60.172	51.226	-14,9	536.909	479.420	-10,7	639.008	582.245	-8,9
Pazar/Market	Toplam/Total	72.640	62.699	-13,7	709.391	621.483	-12,4	941.531	822.959	-12,6
	Otomobil/P.Cars	47.508	43.440	-8,6	459.611	423.057	-8,0	609.133	556.965	-8,6
İthalat/Import	Toplam/Total	42.778	38.902	-9,1	419.866	387.271	-7,8	558.680	505.937	-9,4
	Otomobil/P.Cars	33.748	31.194	-7,6	317.354	307.135	-3,2	422.839	403.812	-4,5
İhracat/Export	Toplam/Total	68.945	60.253	-12,6	661.799	596.247	-9,9	785.325	725.414	-7,6
	Otomobil/P.Cars	40.076	37.293	-6,9	370.733	337.619	-8,9	439.470	409.560	-6,8
İhracat / Export (\$)	Toplam/Total **	1.794.462.082	1.662.153.253	-7,4	17.064.718.984	15.910.016.947	-6,8	19.796.279.057	18.964.089.080	-4,2
	Otomobil/P.Cars	607.257.717	538.470.412	-11,3	5.474.379.300	4.945.841.283	-9,7	6.439.222.620	6.011.395.661	-6,6

PARAMETRELER / PARAMETERS		AYLIK/MONTHLY			10 AY/ 10 MONTHS			YILLIK/YEARLY		
		2011	2012	2012/2011 (%)	2011	2012	2012/2011 (%)	2011	2012	2012/2011 (%)
ÜFE/PPI		1,60	0,17	**	11,48	0,90	**	12,58	2,57	**
TÜFE/CPI		3,27	1,96	**	7,95	5,36	**	7,66	7,80	**
Sanayi Endeksi/ Industry Index		1,00	0,37	**	13,56	1,82	**	16,56	1,68	**
\$ (*)		1,7568	1,7939	2,1	1,6595	1,7914	7,9	1,6372	1,7924	9,5
EURO (*)		2,4606	2,3194	-5,7	2,3344	2,3085	-1,1	2,2810	2,3327	2,3
Japon Yeni (*)		2,2542	2,2473	-0,3	2,0761	2,2631	9,0	2,0380	2,2688	11,3

(*) Ortalama Değerler / Average Values

(**) Toplam Sanayi / Total Industry Including Components

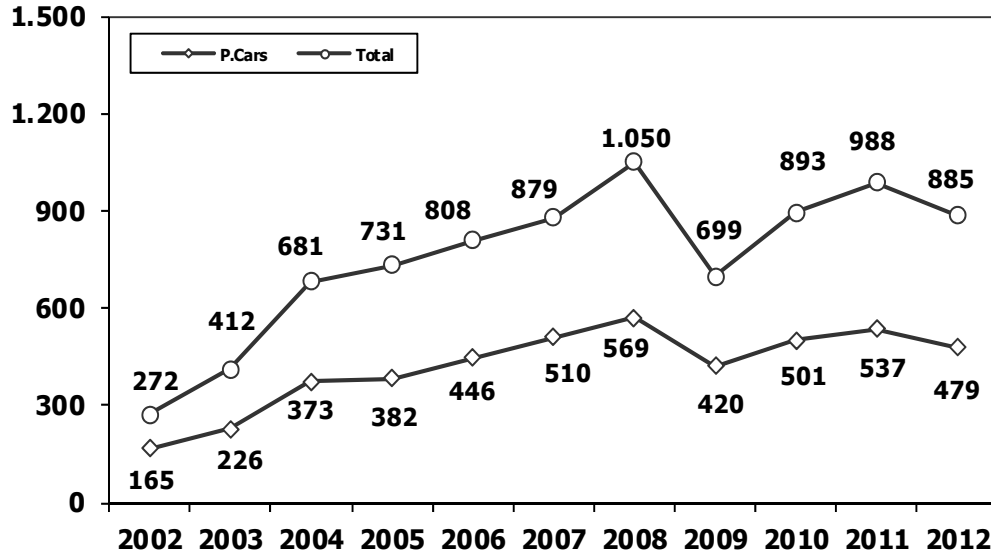


2011/2012 Yılları Üretim 2011/2012 Production

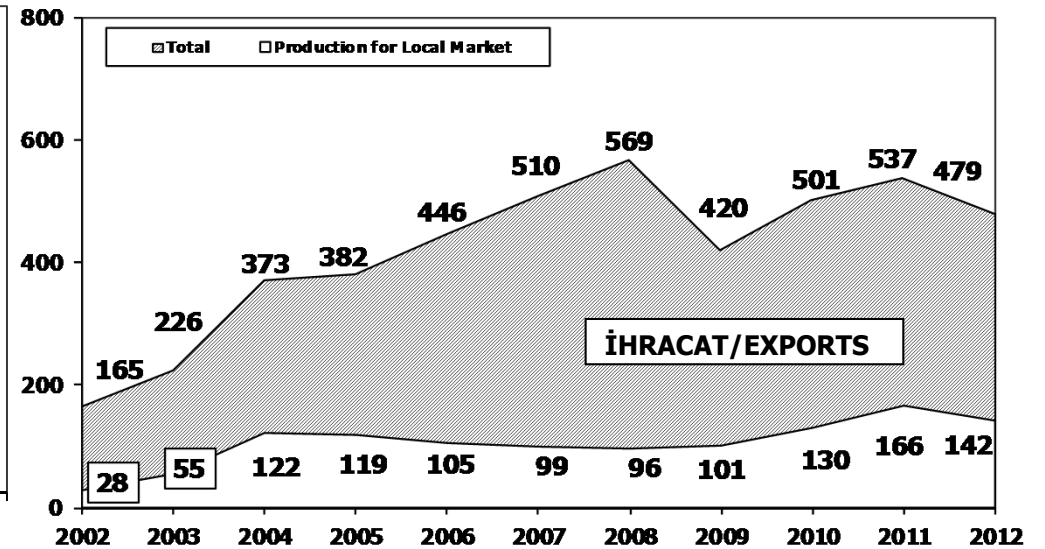
K.KAMYON : AYA 3.5-12 Ton (L.Truck:GVW 3.5-12 Ton)
B.KAMYON : AYA 12 Ton'dan Büyük (M.Truck:GVW 12 Ton And Up)

TİPLER	EKİM AYI ÜRETİMİ October Production		10 AYLIK ÜRETİM 10 Months Production		DEĞİŞİM % Percent Change %	
	2011	2012	2011	2012	EKİM October	10 AY 10 Months
OTOMOBİL - Pass.Car	60.172	51.226	536.909	479.420	-15	-11
TİCARİ ARAÇLAR - Commercial Vehicles	43.774	39.447	450.784	405.248	-10	-10
* B. KAMYON - M. Truck	2.685	1.805	27.465	23.347	-33	-15
* K. KAMYON - L. Truck	429	300	3.474	2.374	-30	-32
* KAMYONET - Pick Up	37.770	33.973	394.069	348.053	-10	-12
* OTOBÜS - Bus	581	478	5.793	5.459	-18	-6
* MİNİBÜS - Minibus	1.994	2.457	17.126	22.607	23	32
* MİDİBÜS - Midibus	315	434	2.857	3.408	38	19
TAŞIT ARAÇLARI TOPLAM - MV Total	103.946	90.673	987.693	884.668	-13	-10
TRAKTÖR - F.Tractor	4.137	2.691	37.665	37.386	-35	-1
GENEL TOPLAM - Grand Total	108.083	93.364	1.025.358	922.054	-14	-10

Toplam Üretim ve Otomobil Üretimi (x1000) (Ocak-Ekim)
Total & P.Cars Production (x1000) (January- October)

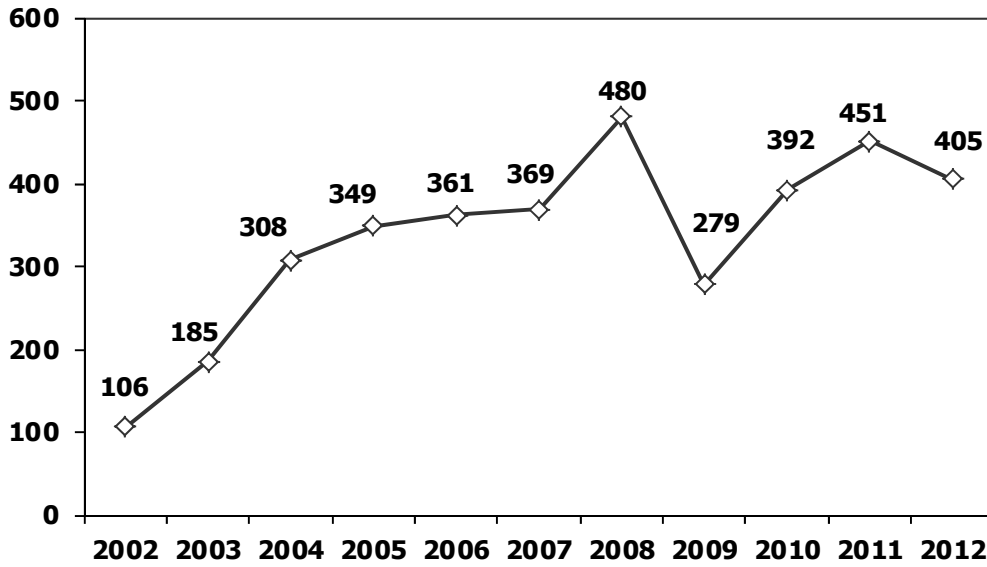


Otomobil Üretimi ve İhracat (x1000) (Ocak-Ekim)
P.Cars Production & Exports (x1000) (January- October)

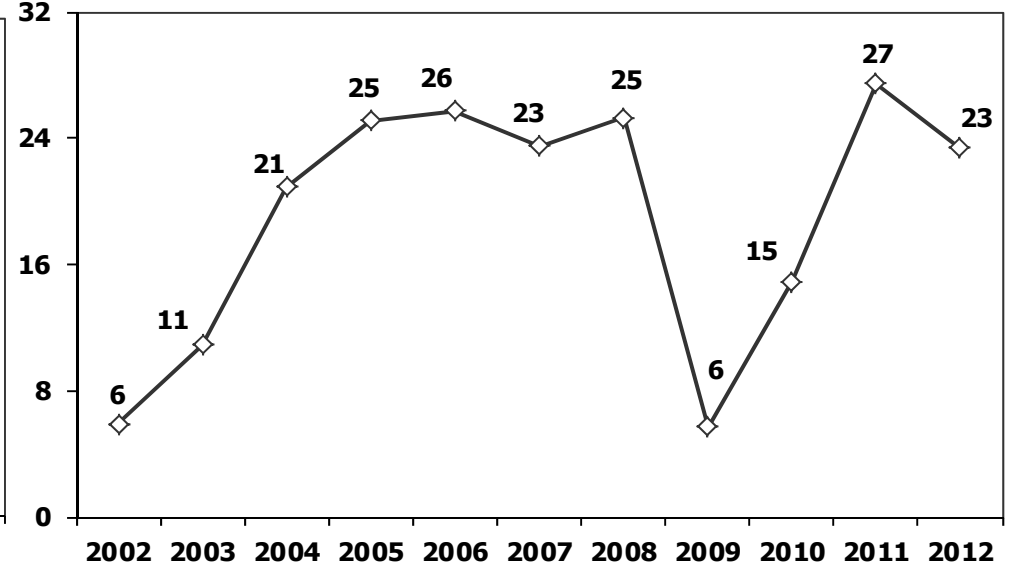




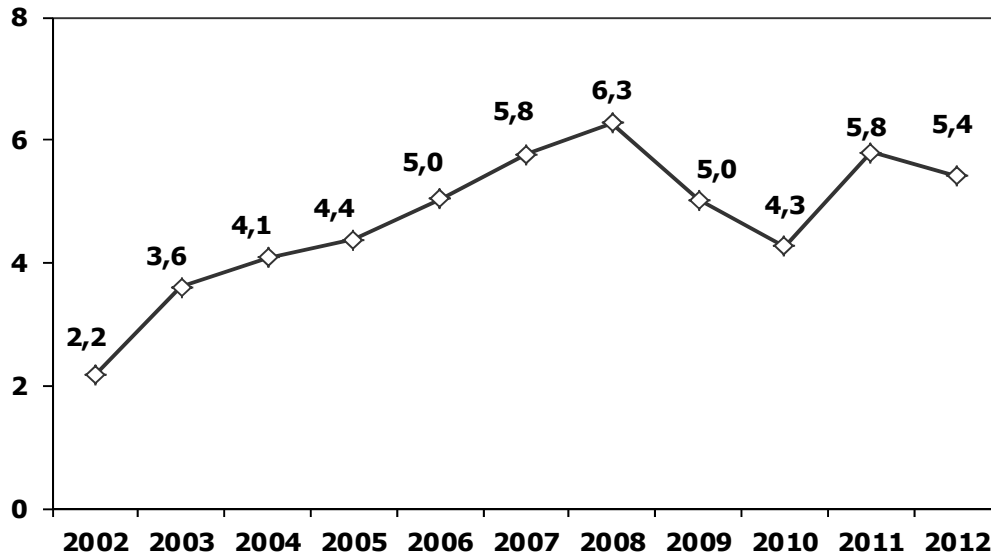
Ticari Araç Üretimi (x1000) (Ocak-Ekim)
Commercial Vehicle Production (x1000) (January- October)



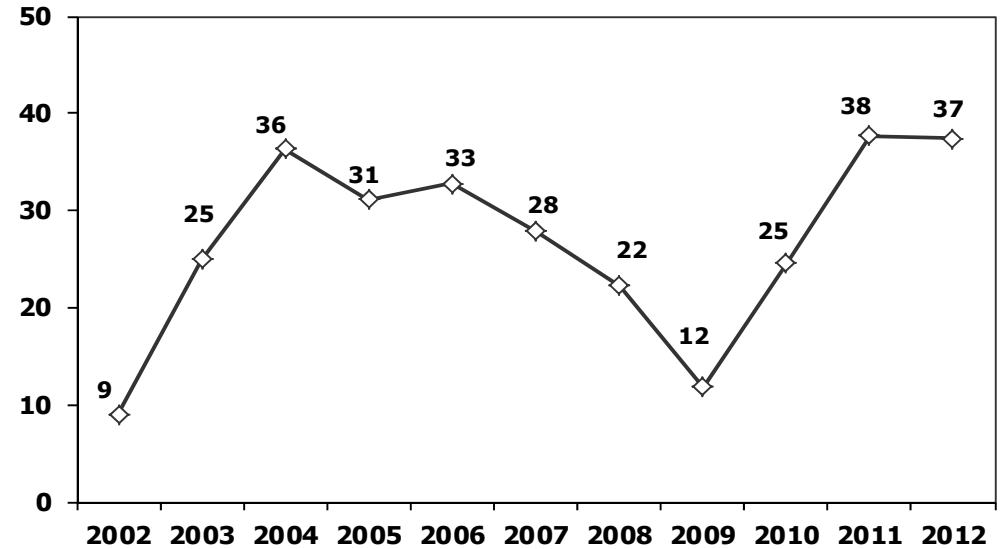
(AYA >12 Ton) **Büyük Kamyon Üretimi** (x1000) (Ocak-Ekim)
(GVW >12 Ton) Heavy Truck Production (x1000) (January- October)



Otobüs Üretimi (x1000) (Ocak-Ekim)
Bus Production (x1000) (January- October)

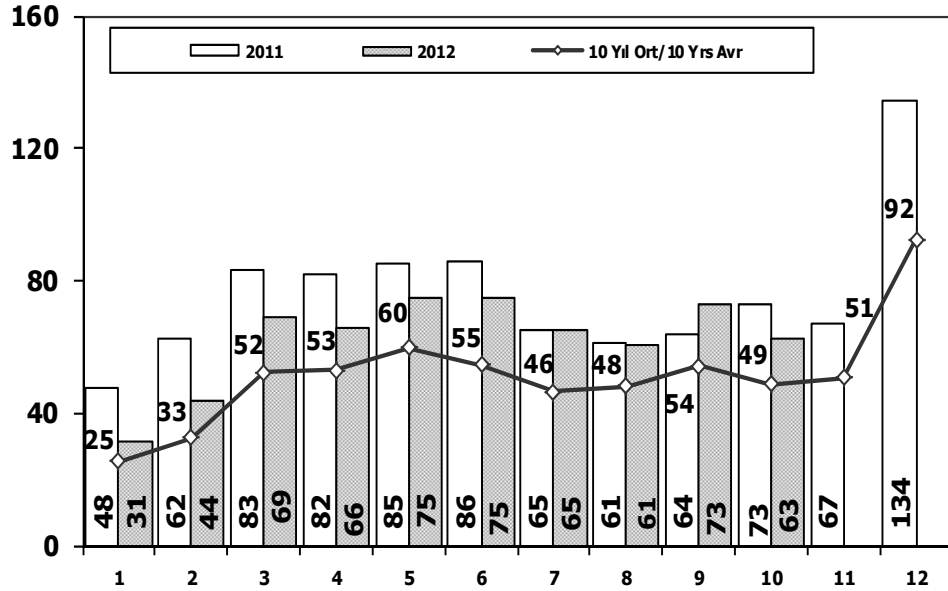


Traktör Üretimi (x1000) (Ocak-Ekim)
F. Tractor Production (x1000) (January- October)



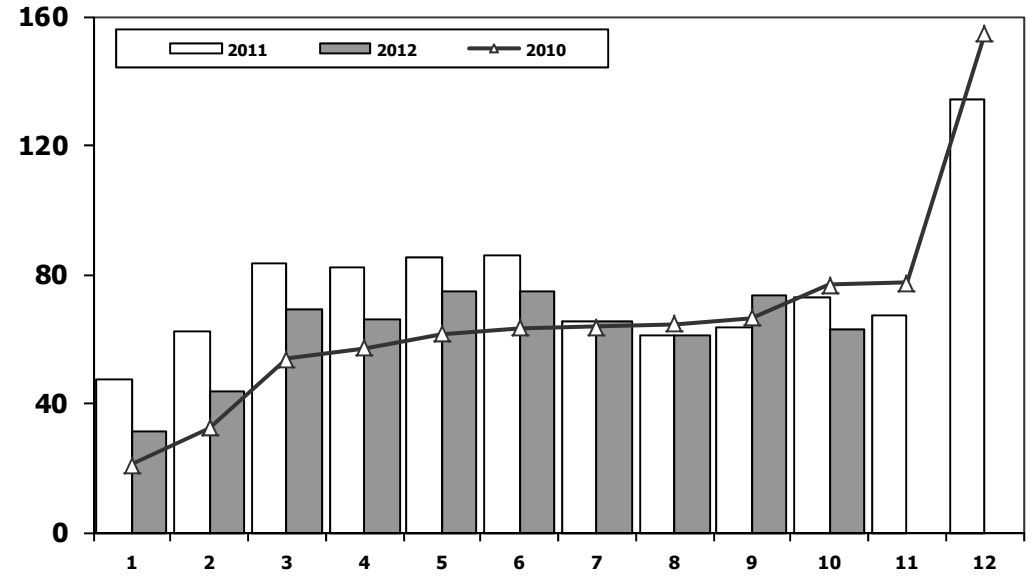


Toplam Pazarın Analizi (x1000) Total Market Analysis (x1000)



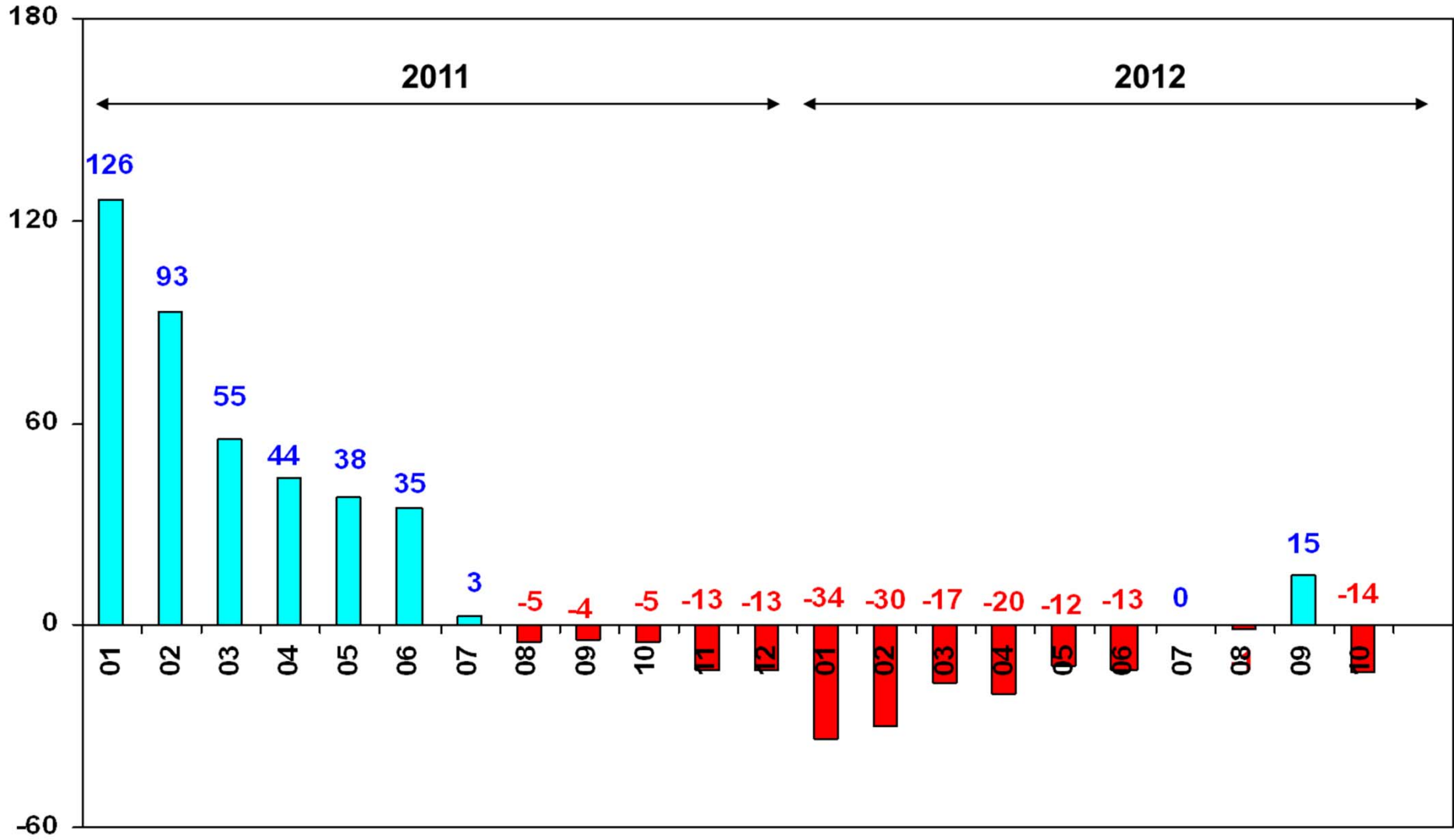
Aylar / Months	10 Yil Ort. 10 Yrs Avr. (x1000)	2012 (x1000)	%
1	25,4	31,2	22,8
2	32,5	43,8	34,7
3	52,2	69,0	32,0
4	53,0	66,0	24,7
5	59,8	74,8	25,0
6	54,5	74,8	37,1
7	46,4	65,1	40,3
8	48,0	60,8	26,8
9	54,3	73,2	34,9
10	48,8	62,7	28,5
Total	475,0	621,5	30,8

Toplam Pazar (x1000) Total Market (x1000)



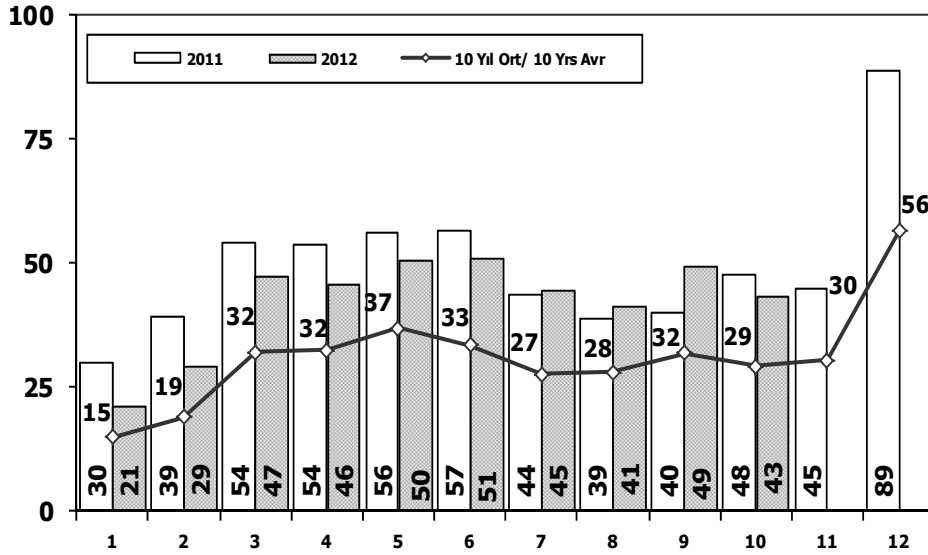
	1	2	3	4	5	6	7	8	9	10	11	12	10 Ay/Mo	Total
2002	2.248	4.310	8.065	12.192	16.807	15.648	16.509	14.738	16.186	18.386	18.478	30.875	125.089	174.442
2003	12.576	11.317	17.095	20.380	27.803	30.517	32.268	28.839	40.315	50.051	44.081	82.721	271.161	397.963
2004	38.621	39.389	71.723	77.056	84.634	63.228	57.307	56.422	59.429	56.153	52.237	85.070	603.962	741.269
2005	22.687	38.291	64.502	60.873	71.383	64.379	63.847	68.647	66.580	60.791	65.719	110.838	581.980	758.537
2006	29.969	44.646	65.090	68.853	83.289	58.203	40.037	47.374	49.629	39.805	55.898	82.722	526.895	665.515
2007	24.950	31.702	45.488	45.633	51.255	51.661	50.117	54.171	50.078	56.058	67.017	106.076	461.113	634.206
2008	33.792	38.121	56.814	50.967	51.627	49.393	44.692	46.592	46.829	35.147	28.152	44.418	453.974	526.544
2009	20.631	22.846	56.531	54.426	64.887	63.102	30.246	37.092	83.403	22.117	29.202	91.386	455.281	575.869
2010	21.050	32.313	53.828	57.079	61.628	63.390	63.718	64.645	66.601	76.780	77.406	154.734	561.032	793.172
2011	47.658	62.348	83.333	82.071	85.093	85.863	65.364	61.378	63.643	72.640	67.195	134.281	709.391	910.867
2012	31.219	43.827	68.957	66.014	74.820	74.781	65.122	60.848	73.196	62.699	0	0	621.483	621.483

TOPLAM PAZARDA AYLIK DEĞİŞİM (%)
Monthly Change in Total Market - %

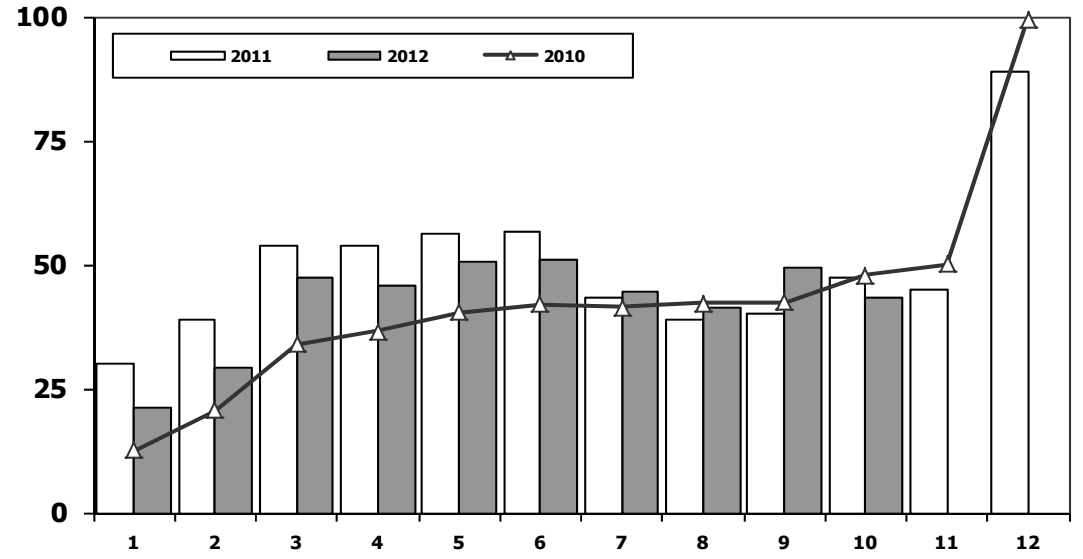




Otomobil Pazarının Analizi (x1000) P.Cars Market Analysis (x1000)



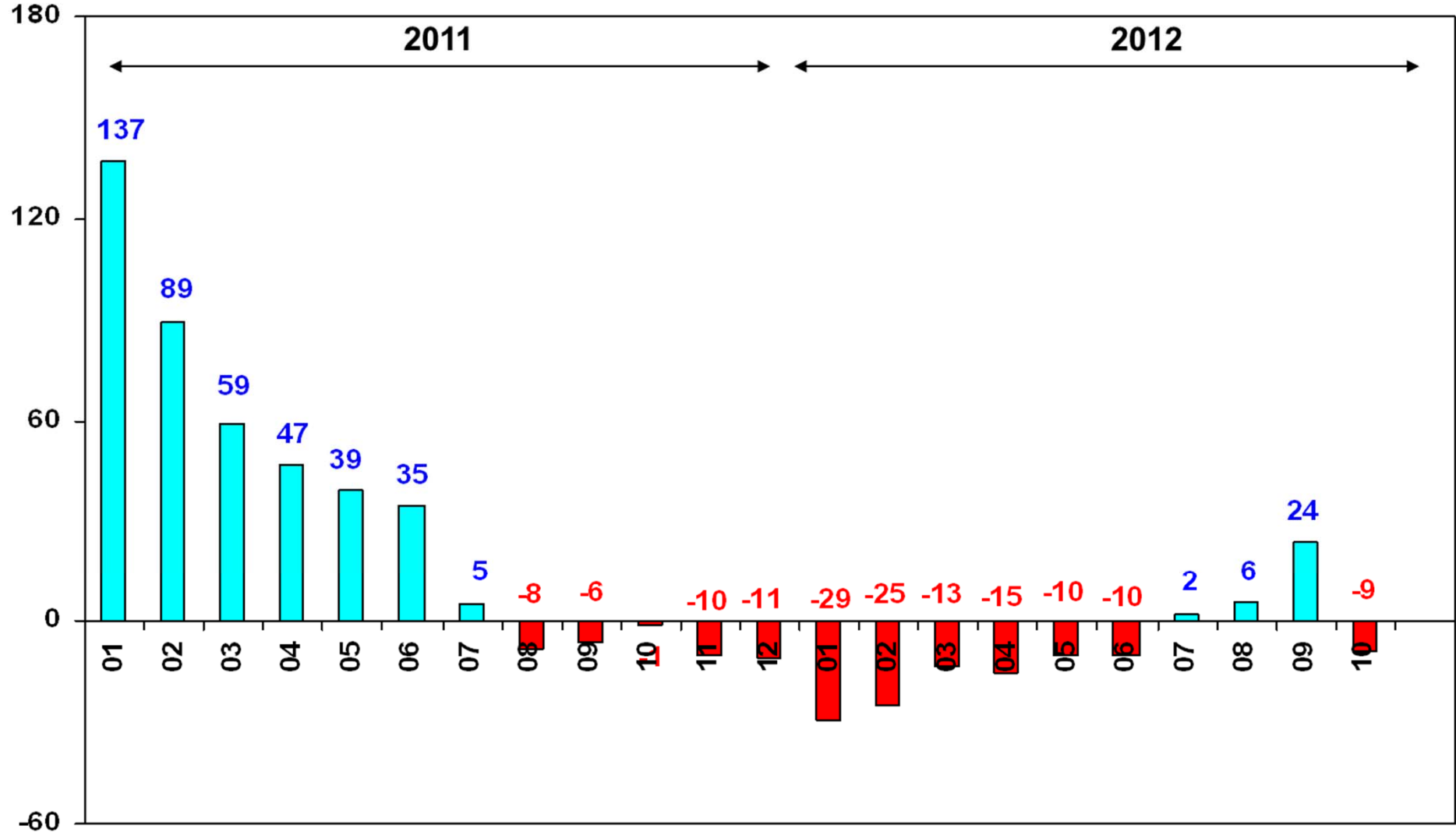
Otomobil Pazarı (x1000) P.Cars Market (x1000)



Aylar / Months	10 Yil Ort. 10 Yrs Avr. (x1000)	2012 (x1000)	%
1	14,8	21,1	42,4
2	18,9	29,2	54,4
3	32,0	47,3	47,6
4	32,4	45,6	41,0
5	36,8	50,5	37,1
6	33,4	50,8	52,1
7	27,5	44,5	61,9
8	28,0	41,2	47,5
9	31,9	49,4	54,7
10	29,2	43,4	48,7
Total	284,9	423,1	48,5

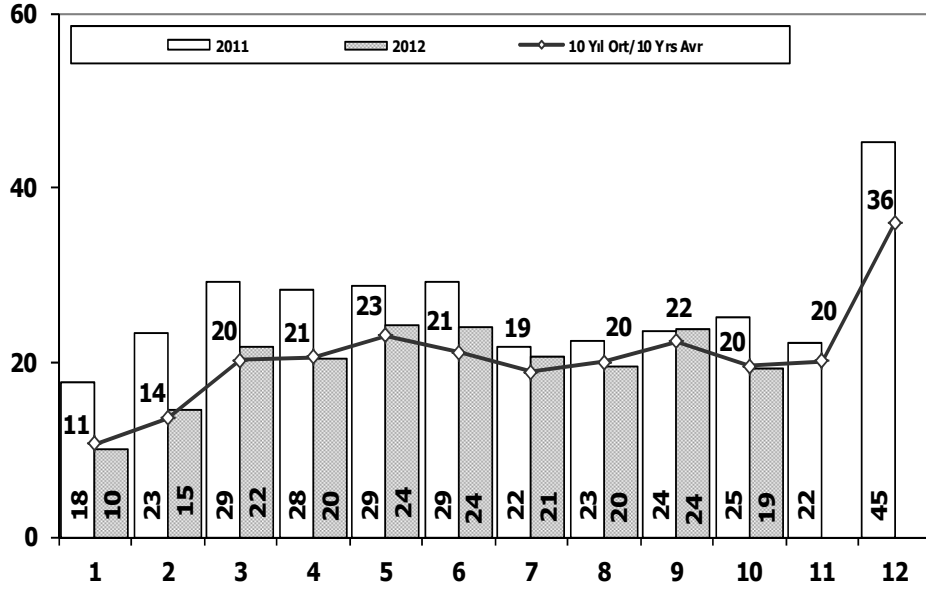
	1	2	3	4	5	6	7	8	9	10	11	12	10 Ay/Mo	Total
2002	591	1.426	3.464	6.245	8.948	7.811	9.842	7.308	8.753	9.381	9.848	16.998	63.769	90.615
2003	6.309	5.486	8.555	11.107	15.965	16.329	14.764	16.896	23.772	30.615	25.777	51.461	149.798	227.036
2004	25.625	23.695	46.075	47.995	54.610	37.671	33.410	33.709	33.383	34.292	30.547	50.197	370.465	451.209
2005	11.595	21.012	38.129	36.206	38.480	40.900	38.969	38.648	36.410	34.960	37.841	65.447	335.309	438.597
2006	16.506	24.929	36.996	40.177	48.521	32.982	22.653	24.873	27.517	21.237	30.477	46.351	296.391	373.219
2007	13.186	17.212	24.336	25.204	29.067	30.126	28.246	28.469	27.662	32.569	39.643	61.745	256.077	357.465
2008	18.588	21.196	34.147	30.313	31.477	28.724	25.530	26.102	27.053	19.788	17.201	25.879	262.918	305.998
2009	13.173	14.492	40.622	36.202	44.188	41.019	16.637	22.537	52.162	13.828	17.781	57.178	294.860	369.819
2010	12.594	20.651	33.958	36.549	40.467	42.086	41.399	42.222	42.477	47.859	50.061	99.461	360.262	509.784
2011	29.868	39.004	54.023	53.835	56.302	56.714	43.518	38.875	39.964	47.508	44.951	88.957	459.611	593.519
2012	21.077	29.189	47.270	45.645	50.460	50.849	44.531	41.236	49.360	43.440	0	0	423.057	423.057

OTOMOBİL PAZARINDA AYLIK DEĞİŞİM (%)
Monthly Change in P.Cars Market - %



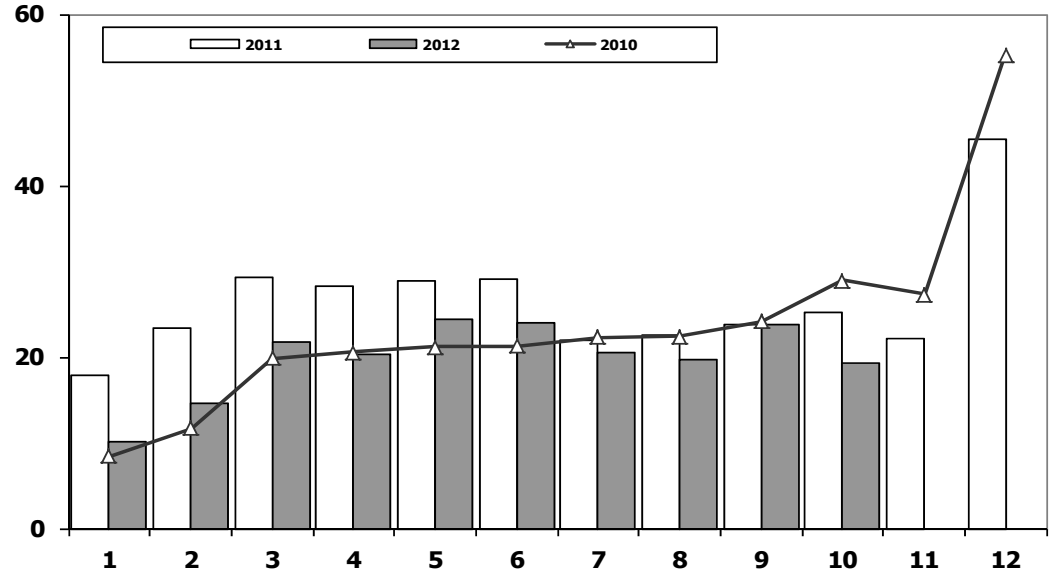


Ticari Araç Pazarının Analizi (x1000) CV Market Analysis (x1000)



Aylar / Months	10 Yil Ort. 10 Yrs Avr. (x1000)	2012 (x1000)	%
1	10,6	10,1	-4,5
2	13,6	14,6	7,5
3	20,2	21,7	7,3
4	20,6	20,4	-1,0
5	23,0	24,4	5,7
6	21,1	23,9	13,4
7	18,9	20,6	8,9
8	20,0	19,6	-2,1
9	22,4	23,8	6,6
10	19,6	19,3	-1,7
Total	190,0	198,4	4,4

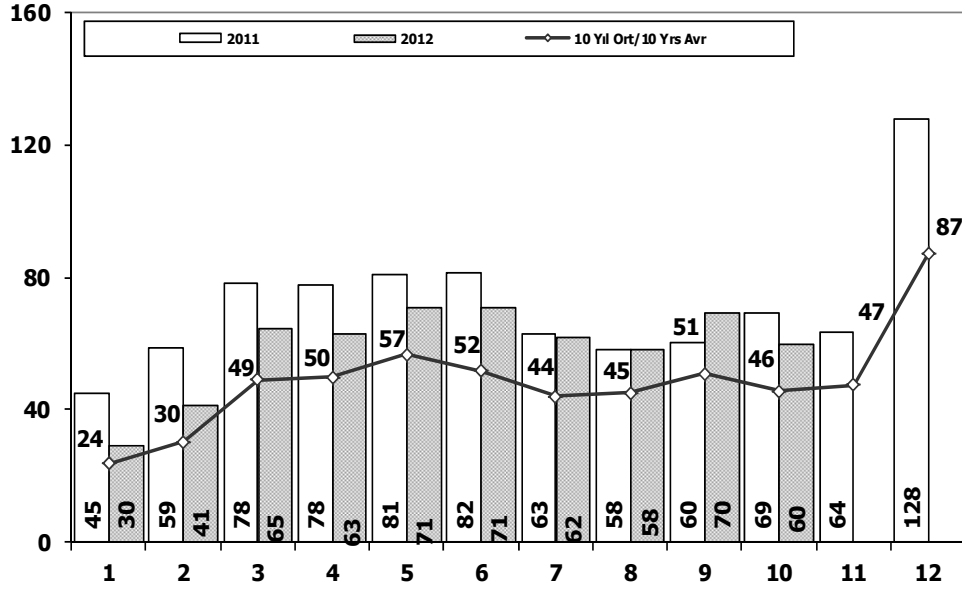
Ticari Araç Pazarı (x1000) CV Total Market (Local + Imports) (x1000)



	1	2	3	4	5	6	7	8	9	10	11	12	10 Ay/Mo	Total
2002	1.657	2.884	4.601	5.947	7.859	7.837	6.667	7.430	7.433	9.005	8.630	13.877	61.320	83.827
2003	6.267	5.831	8.540	9.273	11.838	14.188	17.504	11.943	16.543	19.436	18.304	31.260	121.363	170.927
2004	12.996	15.694	25.648	29.061	30.024	25.557	23.897	22.713	26.046	21.861	21.690	34.873	233.497	290.060
2005	11.092	17.279	26.373	24.667	32.903	23.479	24.878	29.999	30.170	25.831	27.878	45.391	246.671	319.940
2006	13.463	19.717	28.094	28.676	34.768	25.221	17.384	22.501	22.112	18.568	25.421	36.371	230.504	292.296
2007	11.764	14.490	21.152	20.429	22.188	21.535	21.871	25.702	22.416	23.489	27.374	44.331	205.036	276.741
2008	15.204	16.925	22.667	20.654	20.150	20.669	19.162	20.490	19.776	15.359	10.951	18.539	191.056	220.546
2009	7.458	8.354	15.909	18.224	20.699	22.083	13.609	14.555	31.241	8.289	11.421	34.208	160.421	206.050
2010	8.456	11.662	19.870	20.530	21.161	21.304	22.319	22.423	24.124	28.921	27.345	55.273	200.770	283.388
2011	17.790	23.344	29.310	28.236	28.791	29.149	21.846	22.503	23.679	25.132	22.244	45.324	249.780	317.348
2012	10.142	14.638	21.687	20.369	24.360	23.932	20.591	19.612	23.836	19.259	0	0	198.426	198.426

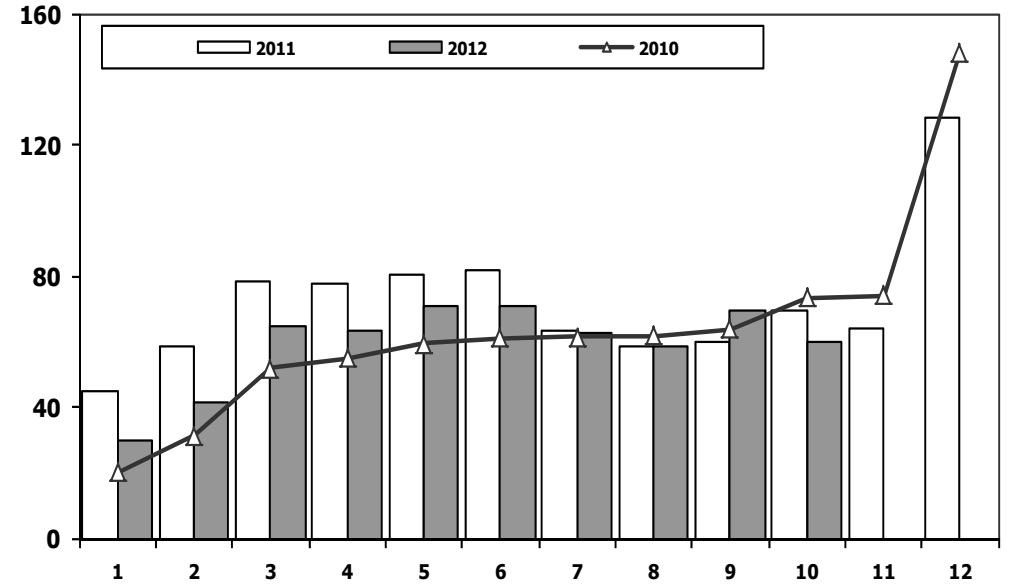


Hafif Arac Pazarının Analizi (x1000) LV Market Analysis (x1000)



Aylar / Months	10 Yil Ort. 10 Yrs Avr. (x1000)	2012 (x1000)	%
1	23,8	29,5	24,4
2	30,4	41,3	36,0
3	49,2	64,9	32,0
4	49,9	62,9	26,1
5	56,7	70,9	25,0
6	51,6	71,1	37,7
7	44,2	62,3	41,1
8	45,0	58,1	29,3
9	51,0	69,6	36,4
10	45,8	59,9	31,0
Total	447,4	590,7	32,0

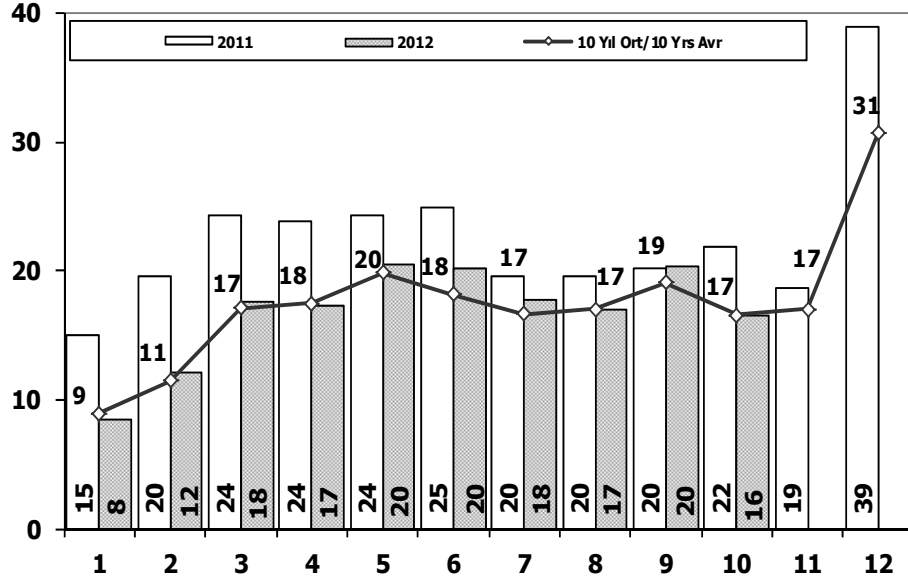
Hafif Arac Pazarı (x1000) LV Total Market (Local + Imports) (x1000)



	1	2	3	4	5	6	7	8	9	10	11	12	10 Ay/Mo	Total
2002	1.764	3.641	7.109	11.007	15.461	14.337	15.472	13.302	14.599	16.531	16.657	27.569	113.223	157.449
2003	11.531	10.402	15.743	18.693	25.853	28.266	30.172	25.903	36.234	45.446	40.048	75.778	248.243	364.069
2004	36.352	37.079	67.144	73.075	80.290	59.730	54.816	52.876	55.609	53.000	49.200	78.924	569.971	698.095
2005	20.747	35.766	60.707	56.844	67.357	60.796	61.015	64.011	61.954	56.638	61.364	103.209	545.835	710.408
2006	27.917	40.938	60.052	64.038	78.229	54.355	37.251	43.767	46.109	36.542	51.867	76.787	489.198	617.852
2007	23.117	29.184	41.890	42.366	47.938	48.674	47.490	50.558	46.581	52.725	63.313	100.926	430.523	594.762
2008	31.527	35.251	53.649	47.701	48.598	46.324	42.156	43.670	43.932	32.884	26.253	42.078	425.692	494.023
2009	19.606	21.742	55.111	52.640	63.191	61.067	28.845	35.609	81.397	21.033	27.962	88.923	440.241	557.126
2010	20.095	31.172	51.769	54.946	59.377	60.896	61.345	61.764	63.814	73.404	73.962	148.369	538.582	760.913
2011	44.892	58.663	78.403	77.695	80.646	81.573	63.044	58.406	60.129	69.421	63.657	127.910	672.872	864.439
2012	29.545	41.324	64.884	62.949	70.863	71.067	62.304	58.148	69.629	59.938	0	0	590.651	590.651

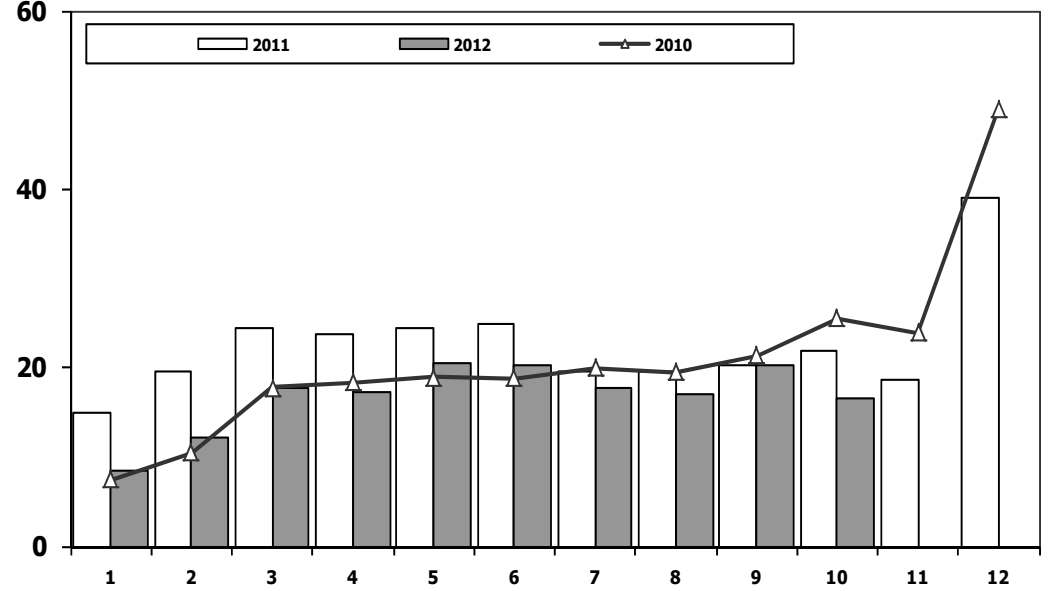


Hafif Ticari Araç Pazarının Analizi (x1000) LCV Market Analysis (x1000)



Aylar / Months	10 Yil Ort. 10 Yrs Avr. (x1000)	2012 (x1000)	%
1	9,0	8,5	-5,4
2	11,5	12,1	5,8
3	17,1	17,6	2,8
4	17,5	17,3	-1,2
5	19,9	20,4	2,6
6	18,2	20,2	11,3
7	16,7	17,8	6,7
8	17,0	16,9	-0,7
9	19,1	20,3	6,0
10	16,6	16,5	-0,4
Total	162,5	167,6	3,1

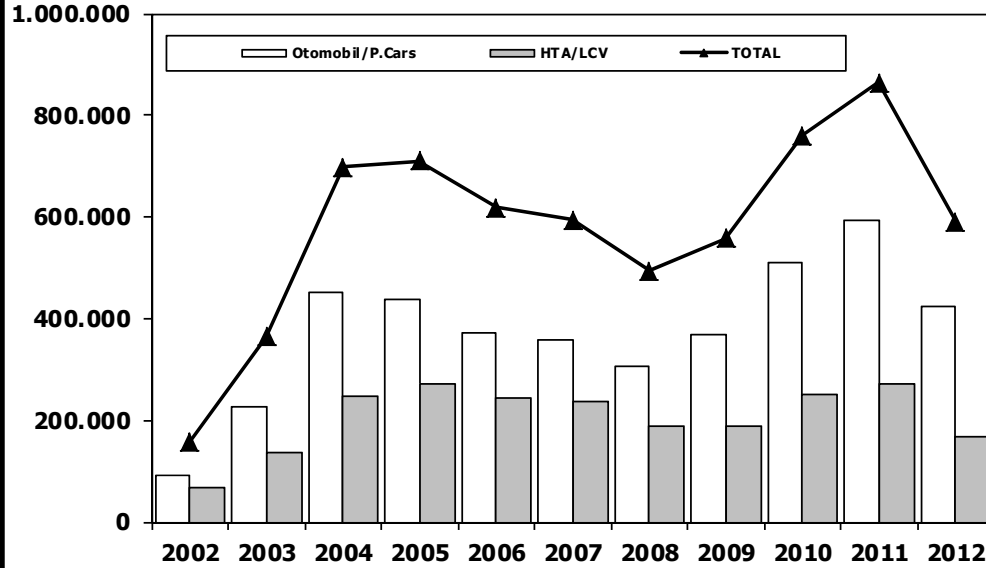
Hafif Ticari Araç Pazarı (x1000) LCV Total Market (Local + Imports) (x1000)



	1	2	3	4	5	6	7	8	9	10	11	12	10 Ay/Mo	Total
2002	1.173	2.215	3.645	4.762	6.513	6.526	5.630	5.994	5.846	7.150	6.809	10.571	49.454	66.834
2003	5.222	4.916	7.188	7.586	9.888	11.937	15.408	9.007	12.462	14.831	14.271	24.317	98.445	137.033
2004	10.727	13.384	21.069	25.080	25.680	22.059	21.406	19.167	22.226	18.708	18.653	28.727	199.506	246.886
2005	9.152	14.754	22.578	20.638	28.877	19.896	22.046	25.363	25.544	21.678	23.523	37.762	210.526	271.811
2006	11.411	16.009	23.056	23.861	29.708	21.373	14.598	18.894	18.592	15.305	21.390	30.436	192.807	244.633
2007	9.931	11.972	17.554	17.162	18.871	18.548	19.244	22.089	18.919	20.156	23.670	39.181	174.446	237.297
2008	12.939	14.055	19.502	17.388	17.121	17.600	16.626	17.568	16.879	13.096	9.052	16.199	162.774	188.025
2009	6.433	7.250	14.489	16.438	19.003	20.048	12.208	13.072	29.235	7.205	10.181	31.745	145.381	187.307
2010	7.501	10.521	17.811	18.397	18.910	18.810	19.946	19.542	21.337	25.545	23.901	48.908	178.320	251.129
2011	15.024	19.659	24.380	23.860	24.344	24.859	19.526	19.531	20.165	21.913	18.706	38.953	213.261	270.920
2012	8.468	12.135	17.614	17.304	20.403	20.218	17.773	16.912	20.269	16.498	0	0	167.594	167.594

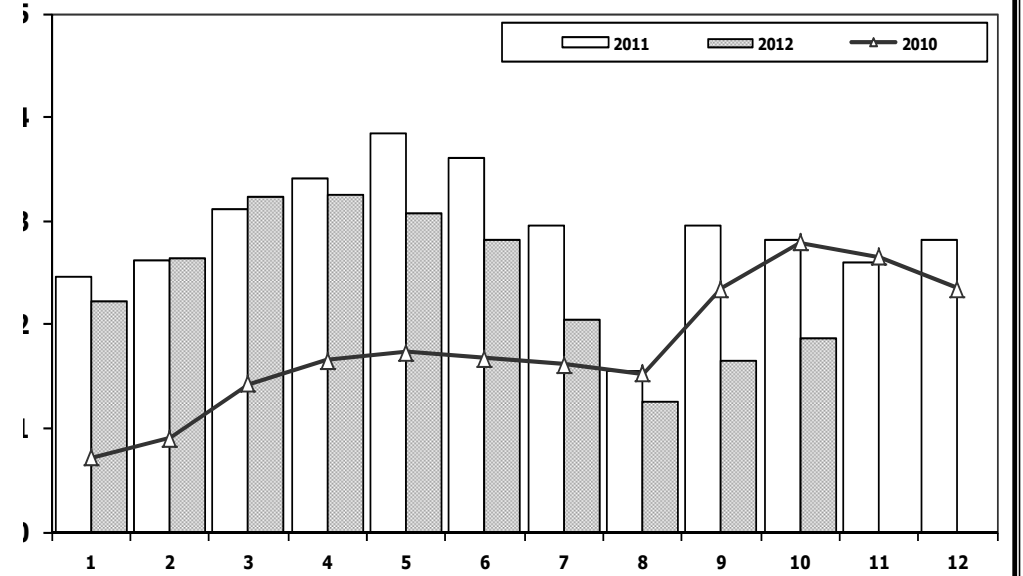


Hafif Araç Pazarı (AYA < 3.5 Ton) (2002-2012) Light Vehicle Market (GVW < 3.5 Ton) (2002-2012)



	2002	2003	2004	2005	2006	2007	2008	2009	2010	2011	2012
Otomobil/P.Cars	90.615	227.036	451.209	438.597	373.219	357.465	305.998	369.819	509.784	593.519	423.057
HTA / LCV	66.834	137.033	246.886	271.811	244.633	237.297	188.025	187.307	251.129	270.920	167.594
TOTAL	157.449	364.069	698.095	710.408	617.852	594.762	494.023	557.126	760.913	864.439	590.651
HTA / LCV (%)	42	38	35	38	40	40	38	34	33	31	28

Traktör Pazarı (x1000) F.Tractor Market (x1000)

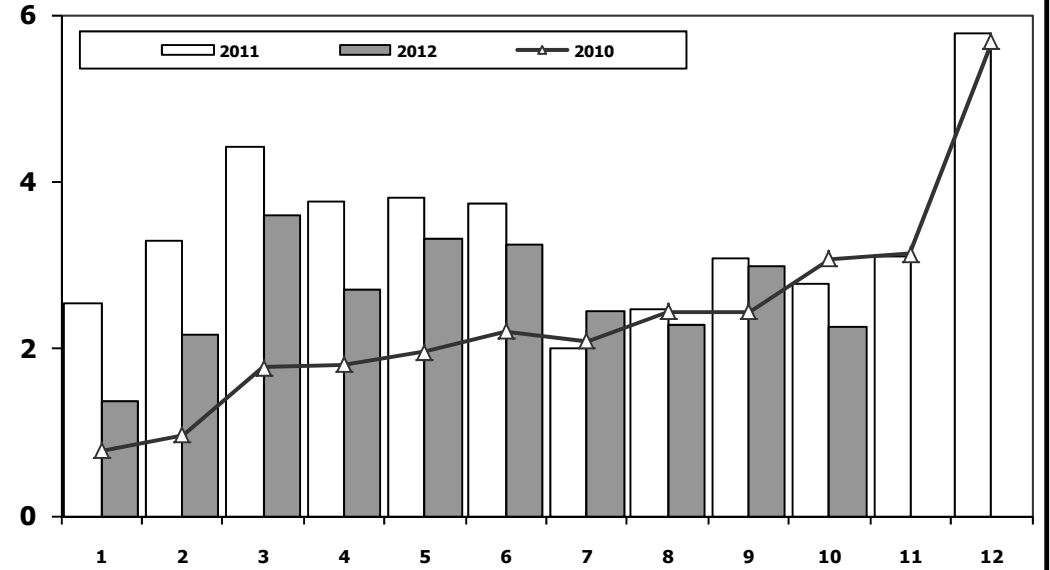
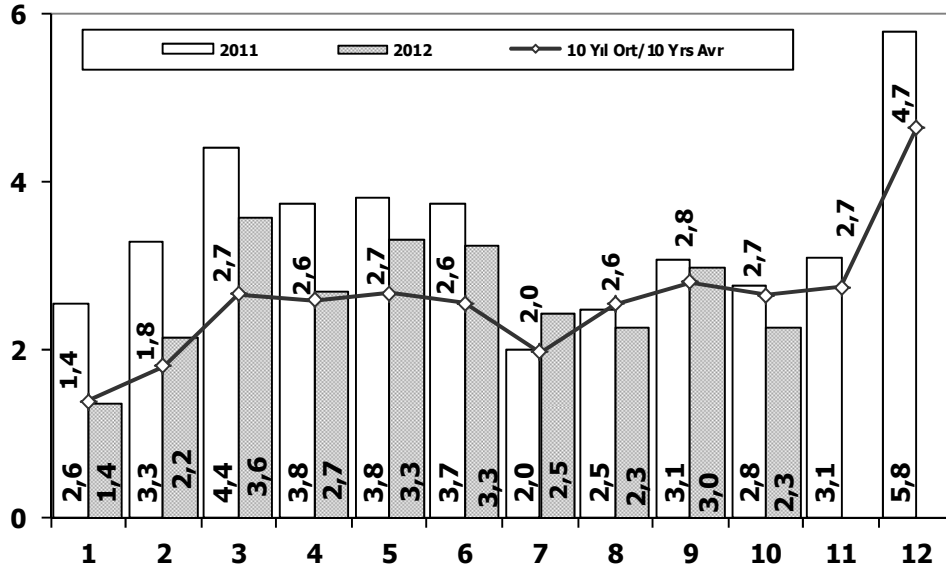


	1	2	3	4	5	6	7	8	9	10	11	12	10 Ay/Mo	Total
2002	291	401	380	585	435	508	561	546	747	628	560	680	5.082	6.322
2003	712	830	1.313	1.460	1.527	1.123	1.311	1.404	1.706	1.893	1.541	1.468	13.279	16.288
2004	1.946	1.874	2.909	3.260	2.863	2.816	1.988	2.209	2.509	1.989	2.198	1.364	24.363	27.925
2005	1.026	1.636	2.001	2.599	2.569	2.780	2.148	2.819	2.567	2.477	2.297	2.089	22.622	27.008
2006	1.578	2.493	2.746	2.841	3.561	2.356	1.685	2.177	2.756	1.915	2.353	1.925	24.108	28.386
2007	1.812	1.778	2.063	2.107	2.266	1.853	1.653	2.065	2.372	2.239	2.231	1.602	20.208	24.041
2008	1.510	1.427	1.933	1.692	1.689	1.592	1.275	924	904	609	707	359	13.555	14.621
2009	267	344	388	638	759	828	741	534	586	765	725	715	5.850	7.290
2010	714	903	1.432	1.653	1.736	1.673	1.613	1.527	2.351	2.787	2.656	2.345	16.389	21.390
2011	2.458	2.610	3.105	3.403	3.847	3.599	2.952	1.559	2.957	2.823	2.603	2.807	29.313	34.723
2012	2.216	2.632	3.223	3.259	3.067	2.821	2.037	1.262	1.648	1.858	0	0	24.023	24.023



Kamyon Pazarının Analizi (x1000) AYA > 5 Ton Truck Market Analysis (x1000) GVW > 5 Ton

Kamyon Pazarı (x1000) AYA > 5 Ton Truck Market (x1000) GVW > 5 Ton

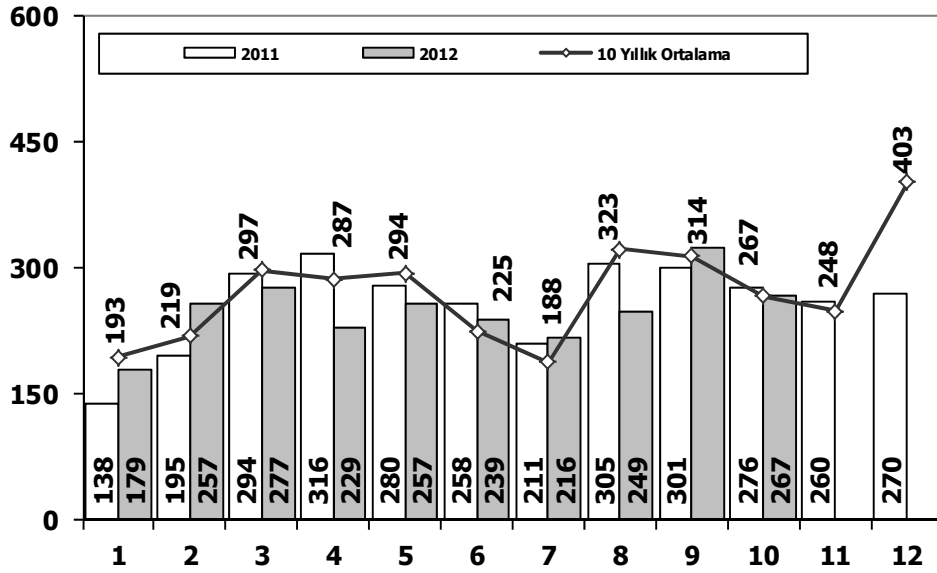


Aylar / Months	10 Yil Ort. 10 Yrs Avr. (x1000)	2012 (x100)	%
1	1,4	1,4	-1,4
2	1,8	2,2	19,1
3	2,7	3,6	35,2
4	2,6	2,7	3,8
5	2,7	3,3	24,0
6	2,6	3,3	26,9
7	2,0	2,5	24,0
8	2,6	2,3	-10,7
9	2,8	3,0	6,7
10	2,7	2,3	-14,5
Total	23,7	26,4	11,4

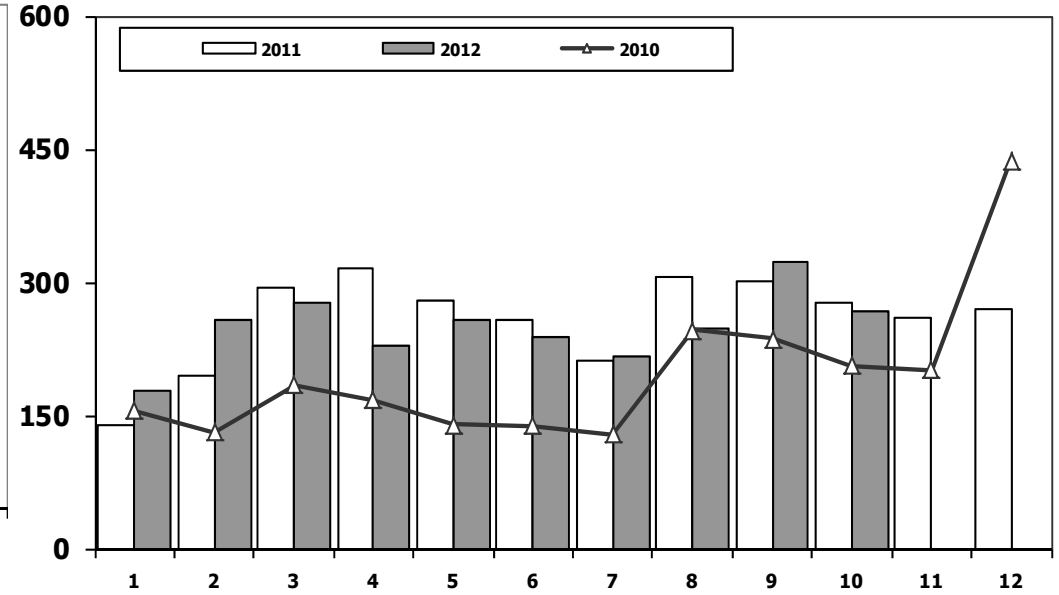
	1	2	3	4	5	6	7	8	9	10	11	12	10 Ay/Mo	Total
2002	403	532	824	1.048	1.157	1.199	927	1.300	1.403	1.666	1.637	2.932	10.459	15.028
2003	771	773	1.123	1.494	1.668	2.008	1.933	2.490	3.563	4.147	3.720	6.406	19.970	30.096
2004	1.863	1.949	3.983	3.352	3.651	3.118	2.234	2.897	3.285	2.727	2.629	5.517	29.059	37.205
2005	1.693	2.186	3.288	3.484	3.413	3.147	2.504	4.028	4.043	3.708	3.918	6.570	31.494	41.982
2006	1.767	3.310	4.467	4.180	4.449	3.398	2.472	3.142	3.052	2.926	3.550	5.358	33.163	42.071
2007	1.554	2.055	3.065	2.940	2.865	2.613	2.372	3.145	2.988	2.886	3.258	4.444	26.483	34.185
2008	1.797	2.309	2.621	2.578	2.459	2.526	2.067	2.377	2.390	1.790	1.512	1.834	22.914	26.260
2009	771	759	1.034	1.342	1.355	1.651	1.156	1.205	1.780	866	981	2.015	11.919	14.915
2010	777	968	1.772	1.807	1.966	2.205	2.093	2.446	2.444	3.071	3.136	5.677	19.549	28.362
2011	2.552	3.292	4.418	3.754	3.803	3.749	1.996	2.478	3.081	2.774	3.108	5.787	31.897	40.792
2012	1.375	2.159	3.595	2.697	3.321	3.250	2.450	2.277	2.991	2.270	0	0	26.385	26.385



Midibüs Pazarının Analizi (7-9 mt / 25-35 Kişilik) Midibus Market Analysis (7-9 mt / 25-35 Passengers)



Midibüs Pazarı (7-9 mt / 25-35 Kişilik Midibüs) Midibus Market (7-9 mt / 25-35 Passengers)



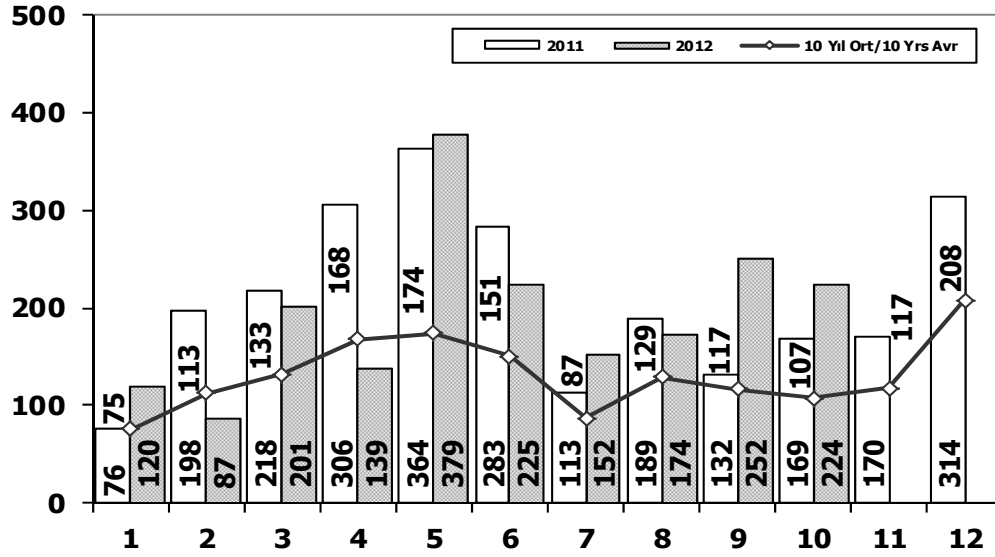
Aylar / Months	10 Yıl Ort. 10 Yrs Avr.	2012	%
1	193	179	-7
2	219	257	18
3	297	277	-7
4	287	229	-20
5	294	257	-13
6	225	239	6
7	188	216	15
8	323	249	-23
9	314	324	3
10	267	267	0
Total	2.607	2.494	-4

	1	2	3	4	5	6	7	8	9	10	11	12	10 Ay/Mo	Total
2002	47	99	86	100	125	106	105	94	141	171	120	300	1.074	1.494
2003	220	109	188	106	158	161	103	322	349	330	212	436	2.046	2.694
2004	233	226	381	431	524	237	154	531	445	331	319	551	3.493	4.363
2005	182	258	432	393	439	269	252	459	436	329	328	574	3.449	4.351
2006	207	297	406	388	381	266	230	353	322	253	305	401	3.103	3.809
2007	207	272	404	238	302	283	164	365	399	279	283	465	2.913	3.661
2008	391	476	436	512	419	331	368	380	341	352	246	270	4.006	4.522
2009	154	124	160	220	174	198	160	175	168	143	206	323	1.676	2.205
2010	155	131	185	167	140	138	129	246	236	206	202	437	1.733	2.372
2011	138	195	294	316	280	258	211	305	301	276	260	270	2.574	3.104
2012	179	257	277	229	257	239	216	249	324	267	0	0	2.494	2.494



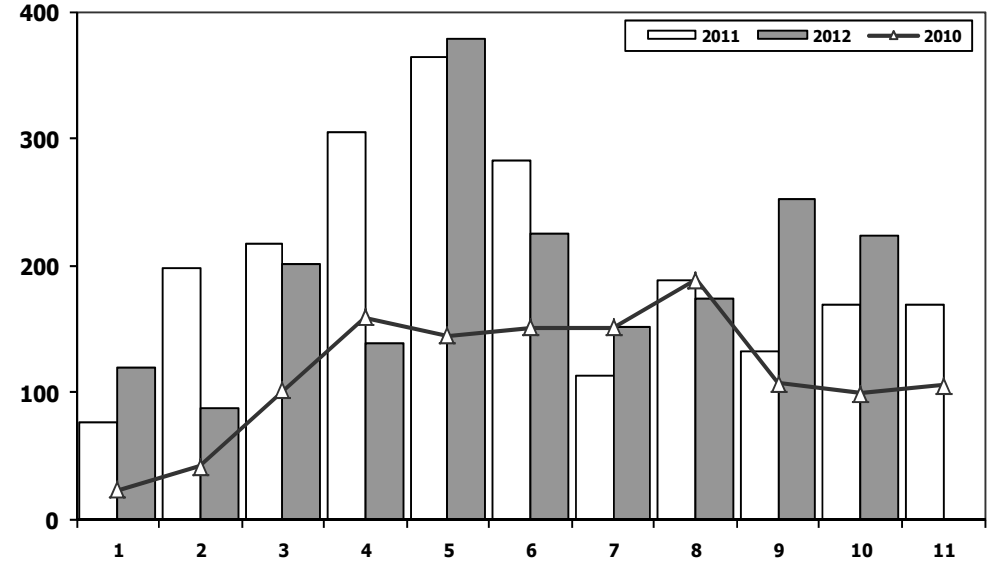
Otobüs Pazarının Analizi

Bus Market Analysis



Otobüs Pazarı

Bus Market

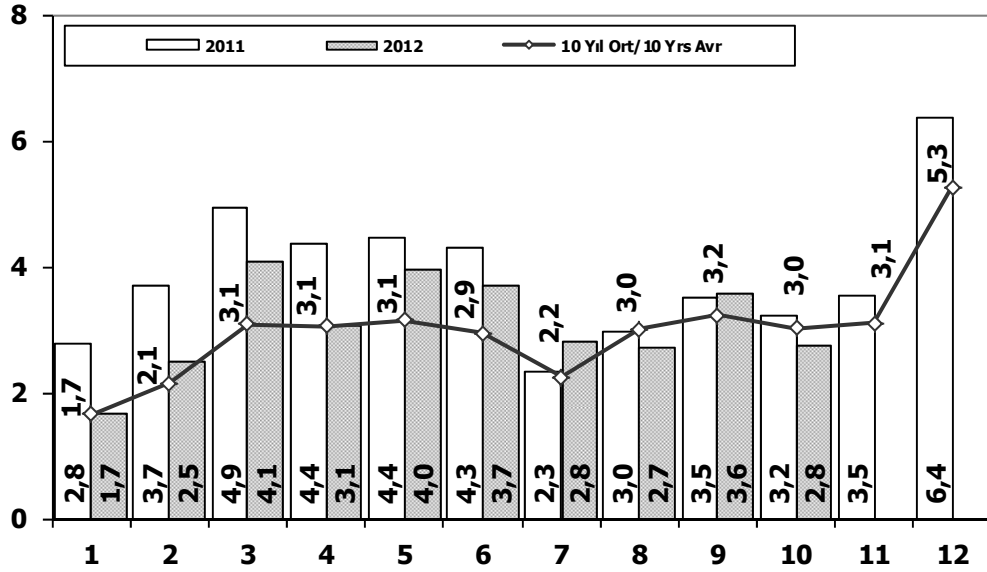


Aylar / Months	10 Yil Ort. 10 Yrs Avr.	2012	%
1	75	120	60
2	113	87	-23
3	133	201	52
4	168	139	-17
5	174	379	118
6	151	225	50
7	87	152	75
8	129	174	34
9	117	252	116
10	107	224	109
Total	1.252	1.953	56

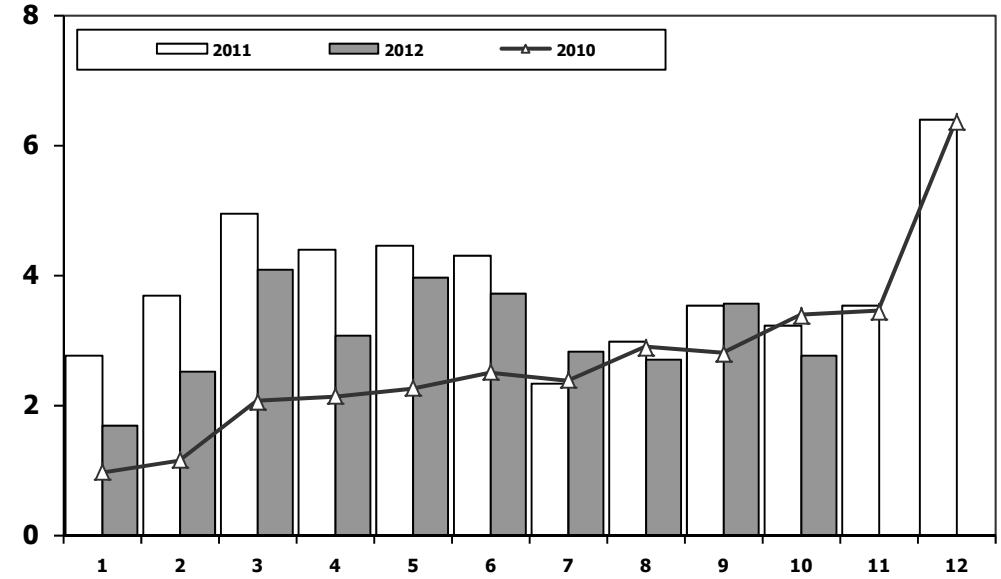
	1	2	3	4	5	6	7	8	9	10	11	12	10 Ay/Mo	Total
2002	34	38	46	37	64	6	5	42	43	18	64	74	333	471
2003	54	33	41	87	124	82	60	124	169	128	101	101	902	1.104
2004	173	135	215	198	169	143	103	118	90	95	89	78	1.439	1.606
2005	65	81	75	152	174	167	76	149	147	116	109	485	1.202	1.796
2006	78	101	165	247	230	184	84	112	146	84	176	176	1.431	1.783
2007	72	191	129	89	150	91	91	103	110	168	163	241	1.194	1.598
2008	77	85	108	176	151	212	101	165	166	121	141	236	1.362	1.739
2009	100	221	226	224	167	186	85	103	58	75	53	125	1.445	1.623
2010	23	42	102	159	145	151	151	189	107	99	106	251	1.168	1.525
2011	76	198	218	306	364	283	113	189	132	169	170	314	2.048	2.532
2012	120	87	201	139	379	225	152	174	252	224	0	0	1.953	1.953



Ağır Ticari Araç Pazarının Analizi (x1000) HCV Market Analysis (x1000)



Ağır Ticari Araç Pazarı (x1000) HCV Market (x1000)

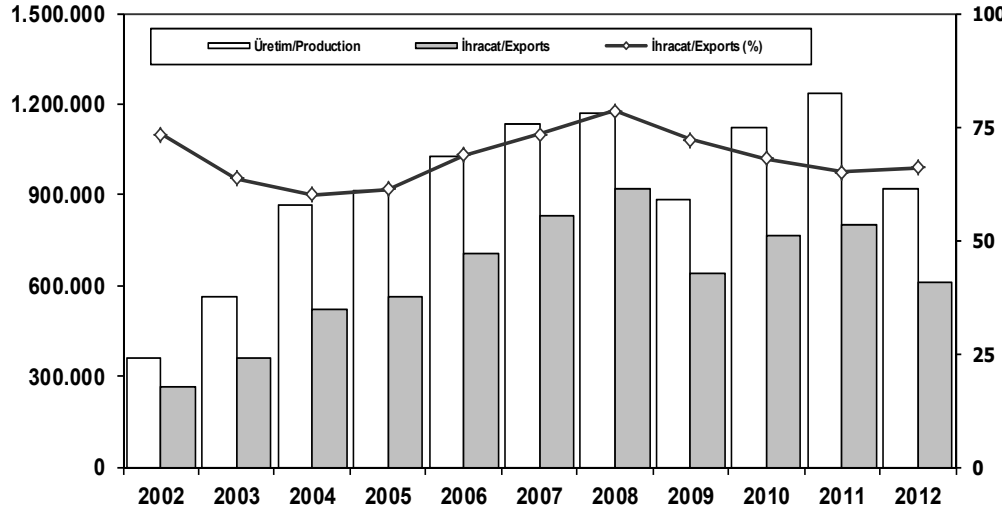


Aylar / Months	10 Yil Ort. 10 Yrs Avr. (x1000)	2012 (x1000)	%
1	1,7	1,7	0,6
2	2,1	2,5	16,7
3	3,1	4,1	31,8
4	3,1	3,1	0,4
5	3,1	4,0	25,8
6	2,9	3,7	26,5
7	2,2	2,8	25,3
8	3,0	2,7	-10,1
9	3,2	3,6	10,3
10	3,0	2,8	-8,9
Total	27,5	30,8	11,9

	1	2	3	4	5	6	7	8	9	10	11	12	10 Ay/Mo	Total
2002	484	669	956	1.185	1.346	1.311	1.037	1.436	1.587	1.855	1.821	3.306	11.866	16.993
2003	1.045	915	1.352	1.687	1.950	2.251	2.096	2.936	4.081	4.605	4.033	6.943	22.918	33.894
2004	2.269	2.310	4.579	3.981	4.344	3.498	2.491	3.546	3.820	3.153	3.037	6.146	33.991	43.174
2005	1.940	2.525	3.795	4.029	4.026	3.583	2.832	4.636	4.626	4.153	4.355	7.629	36.145	48.129
2006	2.052	3.708	5.038	4.815	5.060	3.848	2.786	3.607	3.520	3.263	4.031	5.935	37.697	47.663
2007	1.833	2.518	3.598	3.267	3.317	2.987	2.627	3.613	3.497	3.333	3.704	5.150	30.590	39.444
2008	2.265	2.870	3.165	3.266	3.029	3.069	2.536	2.922	2.897	2.263	1.899	2.340	28.282	32.521
2009	1.025	1.104	1.420	1.786	1.696	2.035	1.401	1.483	2.006	1.084	1.240	2.463	15.040	18.743
2010	955	1.141	2.059	2.133	2.251	2.494	2.373	2.881	2.787	3.376	3.444	6.365	22.450	32.259
2011	2.766	3.685	4.930	4.376	4.447	4.290	2.320	2.972	3.514	3.219	3.538	6.371	36.519	46.428
2012	1.674	2.503	4.073	3.065	3.957	3.714	2.818	2.700	3.567	2.761	0	0	30.832	30.832



İhracat/Üretim (2002-2012) Exports/Production (2002-2012)



	2002	2003	2004	2005	2006	2007	2008	2009	2010	2011	2012
Üretim/Production	357.405	563.450	864.073	916.062	1.026.427	1.132.951	1.171.917	884.466	1.124.982	1.234.637	922.032
İhracat/Exports	261.934	358.745	518.595	561.078	706.402	829.879	920.763	637.855	763.670	801.112	608.903
İhracat/Exports (%)	73	64	60	61	69	73	79	72	68	65	66

Taşıt Araçları İhracatı (2010-2012) Motor Vehicle Exports (2010-2012)

SEKTÖR/SECTOR	2010	2011	2011	2012	2012/2011 (%)
			10 Ay-10 Mo		
OTOMOBİL/ P.Cars	439.999	442.674	370.733	337.619	-9
TİCARİ ARAÇLAR/ CV	314.470	348.292	291.066	258.628	-11
* Kamyonet/Pick-Up	306.902	319.366	267.449	240.143	-10
* Minibüs/Minibus	800	20.163	16.813	11.813	-30
* Kamyon/Truck	2.411	3.912	2.870	2.414	-16
* Midibüs/Midibus	807	647	495	912	84
* Otobüs/Bus	3.550	4.204	3.439	3.346	-3
TAŞIT ARAÇLARI/ MV TOTAL	754.469	790.966	661.799	596.247	-10
TRAKTÖR/F.TRACTOR	9.201	10.146	7.224	12.656	75
TOTAL	763.670	801.112	669.023	608.903	-9

Otomotiv Ana ve Yan Sanayii İhracatı (ABD \$) CBU and CKD Exports - \$

ÜRÜN GRUBU	2007	2008	2009	2010	2011	Ocak-Ekim (January-October)		Değişim % (Change %)
						2011	2012	
TOPLAM YAN SANAYİ (Total Component Industry)	6.107.196.583	6.815.010.471	5.036.315.783	6.595.662.583	8.307.826.870	6.975.320.569	6.859.612.406	-2
İÇ DİŞ LASTİK (Tyres)	865.852.949	943.930.286	813.344.978	988.990.821	1.373.205.546	1.168.736.101	1.029.379.087	-12
EMNİYET CAMI (Safety Glasses)	117.878.256	129.693.764	90.975.616	107.203.983	120.041.467	101.152.773	98.817.345	-2
MOTOR (Engine)	63.160.106	105.583.288	182.857.086	305.490.804	273.896.369	226.126.214	226.891.335	0
AKÜ (Batteries)	153.144.601	194.460.614	147.844.133	186.504.496	232.611.079	180.912.781	195.133.314	8
DİĞER AKSAM ve PARÇALAR (Others)	4.907.160.671	5.441.342.519	3.801.293.970	5.007.472.478	6.308.072.409	5.298.392.700	5.309.391.325	0
TOPLAM ANA SANAYİ (Total Vehicle Industry)	13.066.064.547	15.138.693.360	9.893.379.844	10.855.476.447	12.128.522.618	10.089.398.415	9.050.404.541	-10
OTOBÜS (Bus)	1.100.941.463	1.257.990.095	934.530.219	744.935.284	929.372.870	765.676.420	700.566.286	-9
MİDİBÜS - MİNİBÜS (P. Cars)	163.831.782	211.421.713	114.288.278	120.378.674	145.199.034	105.066.848	135.392.594	29
OTOMOBİL (P. Cars)	6.851.352.830	7.512.491.751	6.100.525.046	6.217.404.551	6.541.969.418	5.474.379.299	4.945.707.416	-10
KAMYON - KAMYONET (HCV-LCV)	4.226.720.251	5.290.296.295	2.371.020.045	3.363.101.038	4.034.772.621	3.392.882.292	2.774.691.691	-18
ÇEKİÇİ (Tractor)	350.509.320	376.862.369	67.706.067	72.145.150	147.247.613	103.044.235	69.365.576	-33
RÖMÖRK ve YARI RÖMÖRK (Trailer-Semi Trailer)	215.817.634	266.050.422	128.201.130	145.710.283	116.912.332	92.047.396	164.492.612	79
TARIM TRAKTÖRÜ (Farm Tractor)	156.891.266	223.580.714	177.109.058	191.801.467	213.048.730	156.301.924	260.188.367	66
TOPLAM (Total)	19.173.261.129	21.953.703.831	14.929.695.627	17.451.139.030	20.436.349.488	17.064.718.984	15.910.016.947	-7

Kaynak: Otomotiv Endüstrisi İhracatçıları Birliği - Orta Anadolu İhracatçı Birlikleri



Firma Bazında İhracat (Adet)
Export Of member Companies (Unit)

FİRMALAR Companies	2010	2011	Ocak-Ekim 10 Months	
			2011	2012
			OYAK RENAULT	233.057
FORD OTOSAN	175.754	211.380	176.464	152.345
TOFAŞ	193.737	180.690	153.636	128.821
TOYOTA	73.163	81.233	67.141	57.160
HYUNDAI ASSAN	42.249	64.000	51.764	56.000
TÜRK TRAKTÖR	8.911	9.600	6.769	12.120
KARSAN	19.441	15.119	12.956	9.730
HONDA TÜRKİYE	10.633	5.023	4.868	7.126
M. BENZ TÜRK	3.471	4.735	3.610	3.481
MAN TÜRKİYE	834	1.216	996	823
A.I.O.S.	498	429	334	758
TEMSA GLOBAL	836	992	852	679
HATTAT TARIM	290	546	455	536
OTOKAR	373	475	346	351
B.M.C.	373	475	287	333
GENEL TOPLAM	763.620	801.198	669.023	608.903

Kaynak: OSD

Sektör Bazında İhracat (\$)
Exports on Sectorial Basis

Sıra No (Rank)	Sektörler Sectors	2010 Toplam (Total)	10 Ay (10 Months)			
			2010	2011	2011/2010 (%)	2011 (%)
1	Otomotiv Endüstrisi	20.400.776	16.782.740	15.679.125	-6,6	12,6
2	Kimyevi Maddeler ve Mamülleri	16.347.328	13.248.022	14.583.121	10,1	11,7
3	Hazırgiyim ve Konfeksiyon	16.186.506	13.664.929	13.301.985	-2,7	10,7
4	Çelik	15.353.615	12.774.059	13.135.274	2,8	10,5
5	Altın (*)	1.269.862	857.724	11.479.849	***	9,2
6	Elektrik-Elektronik ve Makina	10.717.536	9.030.154	9.756.702	8,0	7,8
7	Tekstil ve Hammaddeleri	7.953.651	6.663.314	6.468.577	-2,9	5,2
8	Demir ve Demir Dışı Metaller	7.009.295	5.261.826	5.241.195	-0,4	4,2
9	Hububat, Bakliyat, Yağlı Tohumlar	5.459.028	4.398.411	4.793.053	9,0	3,8
10	Makine ve Aksamları	8.399.508	4.016.307	4.381.225	9,1	3,5
11	Madencilik Ürünleri	3.876.383	3.195.873	3.355.909	5,0	2,7
12	Ağaç Mamülleri, Orman Ürünleri	3.392.701	2.785.668	3.143.666	12,9	2,5
13	İklimlendirme Sanayi	***	3.196.974	3.136.805	-1,9	2,5
14	Çimento ve Toprak Ürünleri	3.220.507	2.685.200	2.606.547	-2,9	2,1
15	Mücevher	1.474.587	1.202.333	1.671.223	39,0	1,3
16	Hali	1.629.537	1.312.570	1.627.164	24,0	1,3
17	Yaş Meyve ve Sebze	2.339.308	1.717.370	1.588.823	-7,5	1,3
18	Fındık ve Mamülleri	1.762.755	1.406.265	1.445.600	2,8	1,2
19	Su Ürünleri ve Hayvansal Mamuller	1.421.426	1.143.154	1.327.638	16,1	1,1
20	Deri ve Deri Mamülleri	1.440.411	1.214.204	1.317.373	8,5	1,1
21	Kuru Meyve ve Mamülleri	1.372.595	1.119.536	1.091.153	-2,5	0,9
22	Meyve Sebze Mamülleri	1.204.755	946.790	1.030.555	8,8	0,8
23	Savunma Sanayi	***	661.045	1.003.909	51,9	0,8
24	Tütün ve Mamülleri	698.602	572.661	718.679	25,5	0,6
25	Gemi ve Yat	1.331.025	1.216.056	638.983	-47,5	0,5
26	Zeytin ve Zeytinyağ	181.212	147.288	155.171	5,4	0,1
27	Diğer Sanayi Ürünleri	73.587	63.409	68.190	7,5	0,1
28	Süs Bitkileri	76.322	66.974	60.187	-10,1	0,0
TOPLAM		134.592.818	111.350.856	124.807.681	12,1	100,0

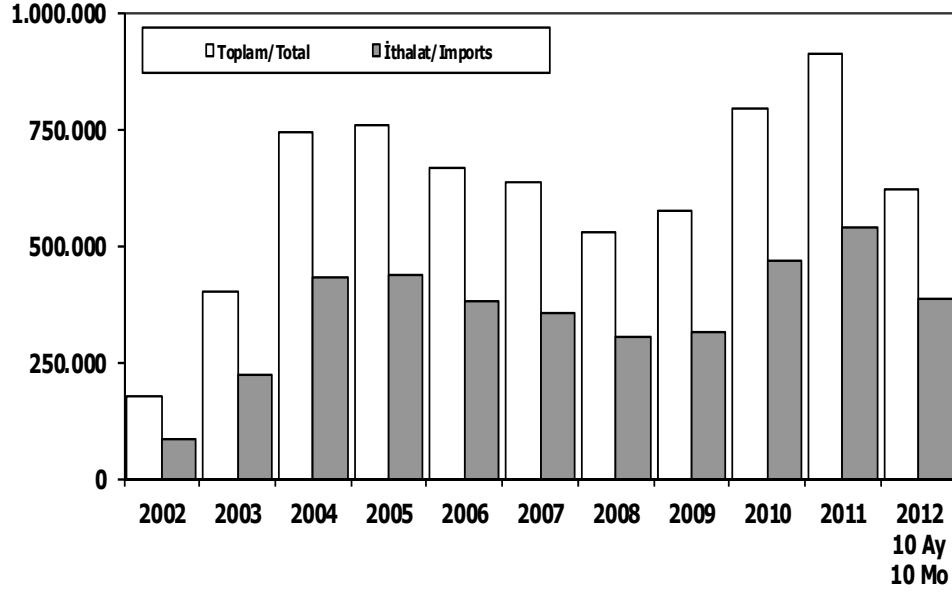
(*): İhracatçı Birlikleri Kaydından Muaf İhracat

Kaynak: TİM

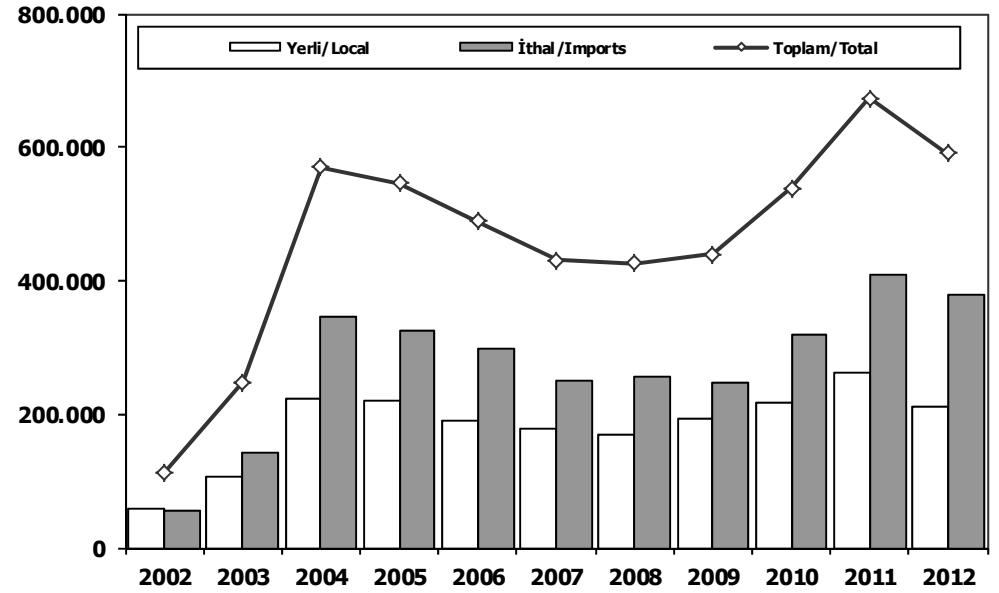
First 5 Sectors:

- 1- Transport Vehicle and Component Industry
- 2- Chemical Articles and Products
- 3-Ready Wear and Confection
- 4- Iron Steel Products
- 5-Gold

Toplam Pazar (Otomobil+T.Araç) Total Market (P.Cars+C.V)



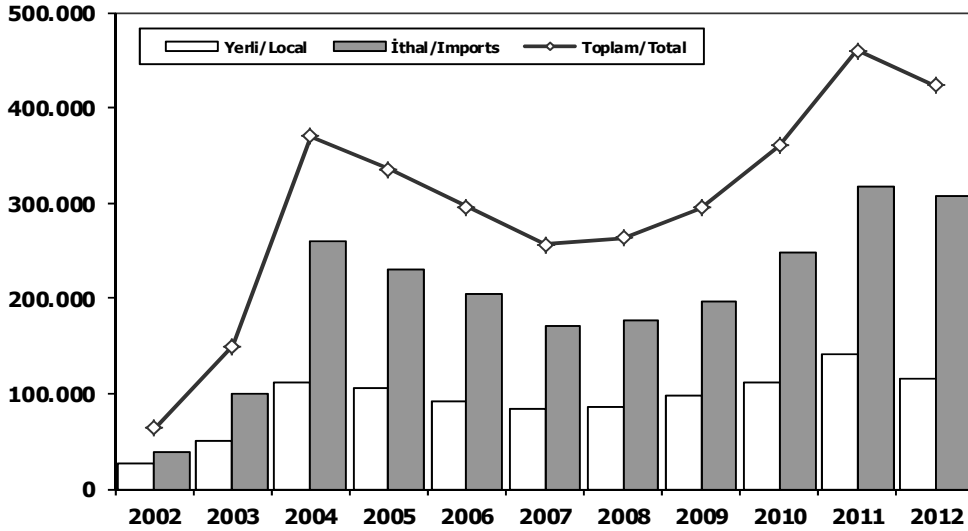
Hafif Araçlar Pazarı (2002-2012 Ocak-Ekim) LV Market (2002-2012 January-October)



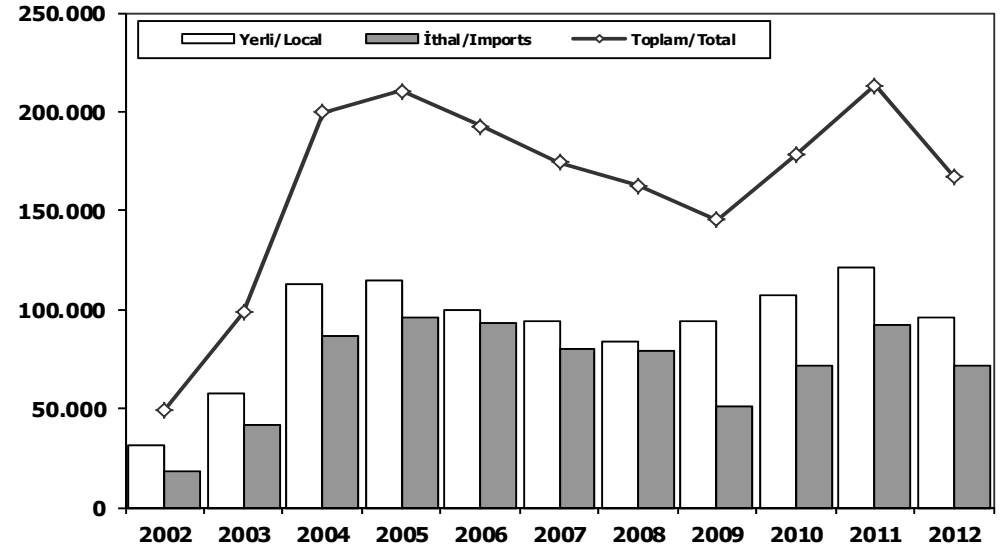
	2002	2003	2004	2005	2006	2007	2008	2009	2010	2011	2011 10 Ay 10 Mo	2012 10 Ay 10 Mo
Toplam/Total	174.442	397.963	741.269	758.537	665.515	634.206	526.544	575.869	793.172	910.867	709.391	621.483
İthalat/Imports	83.027	222.984	430.204	436.033	382.460	355.752	306.087	313.921	465.408	538.532	419.866	387.271
İthalat/Imports (%)	48	56	58	57	57	56	58	55	59	59	59	62

	2002	2003	2004	2005	2006	2007	2008	2009	2010	2011	2012
Yerli/Local	57.475	106.796	223.889	219.514	190.605	178.978	169.366	192.748	218.506	263.316	211.642
İthal/Imports	55.748	141.447	346.082	326.321	298.593	251.545	256.326	247.493	320.076	409.556	379.009
Toplam/Total	113.223	248.243	569.971	545.835	489.198	430.523	425.692	440.241	538.582	672.872	590.651
İthalat/Imports (%)	49	57	61	60	61	58	60	56	59	61	64

Otomobil Pazarı (2002-2012 Ocak-Ekim) P.Cars Market (2002-2012 January-October)

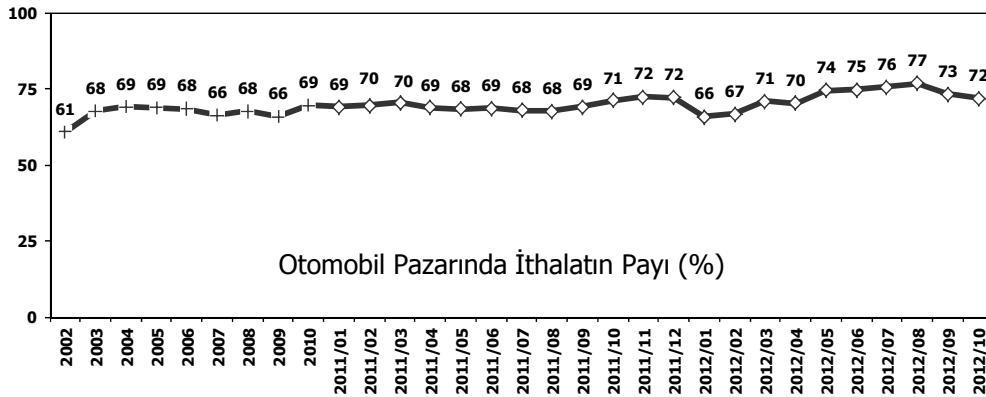


Hafif Ticari Araçlar Pazarı (2002-2012 Ocak-Ekim) Light Commercial Vehicle Market (2002-2012 January-October)

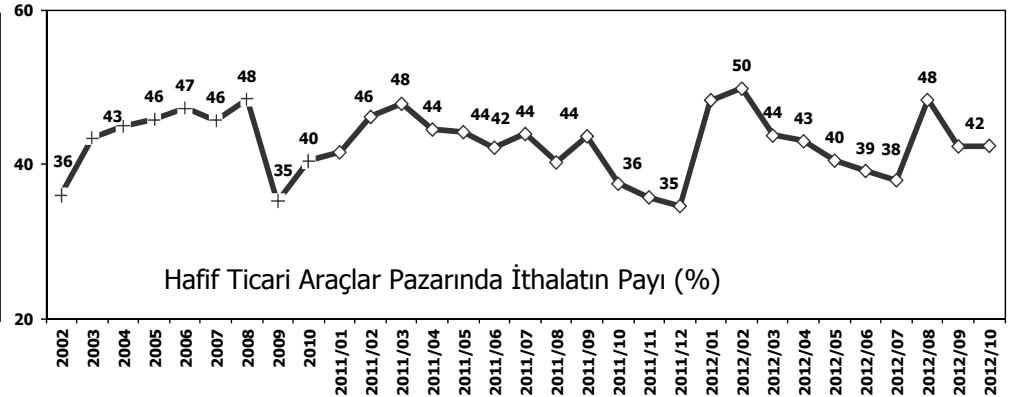


	2002	2003	2004	2005	2006	2007	2008	2009	2010	2011	2012
Yerli/Local	25.918	49.616	111.335	104.764	91.004	84.850	85.708	98.793	111.597	142.257	115.922
İthal/Imports	37.851	100.182	259.130	230.545	205.387	171.227	177.210	196.067	248.665	317.354	307.135
Toplam/Total	63.769	149.798	370.465	335.309	296.391	256.077	262.918	294.860	360.262	459.611	423.057
İthalat/Imports (%)	59	67	70	69	69	67	67	66	69	69	73

	2002	2003	2004	2005	2006	2007	2008	2009	2010	2011	2012
Yerli/Local	31.557	57.180	112.554	114.750	99.601	94.128	83.658	93.955	106.909	121.059	95.720
İthal/Imports	17.897	41.265	86.952	95.776	93.206	80.318	79.116	51.426	71.411	92.202	71.874
Toplam/Total	49.454	98.445	199.506	210.526	192.807	174.446	162.774	145.381	178.320	213.261	167.594
İthalat/Imports (%)	36	42	44	45	48	46	49	35	40	43	43



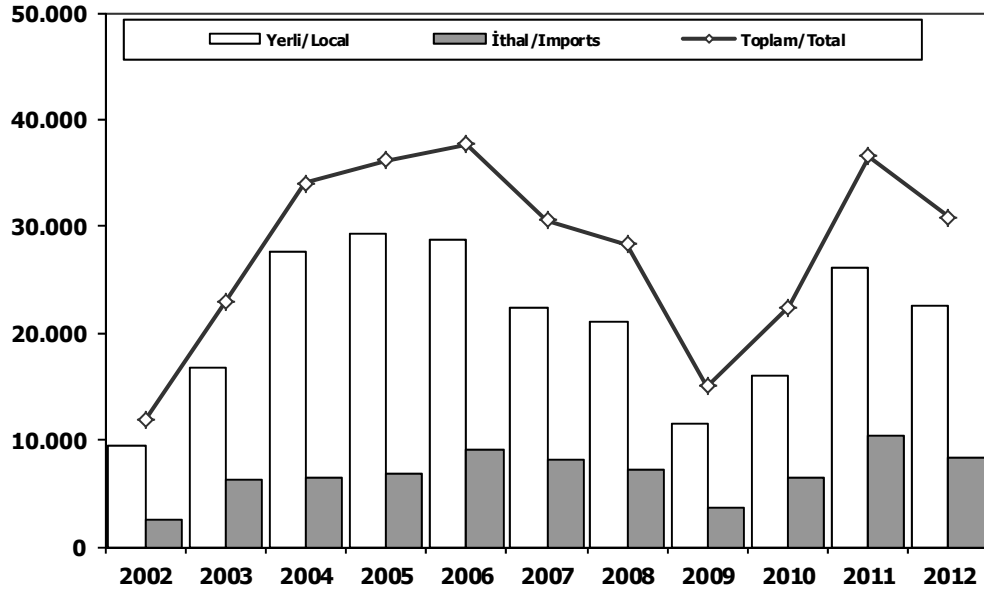
Otomobil Pazarında İthalatın Payı (%)



Hafif Ticari Araçlar Pazarında İthalatın Payı (%)

Ağır Ticari Araçlar Pazarı (2002-2012 Ocak-Ekim)

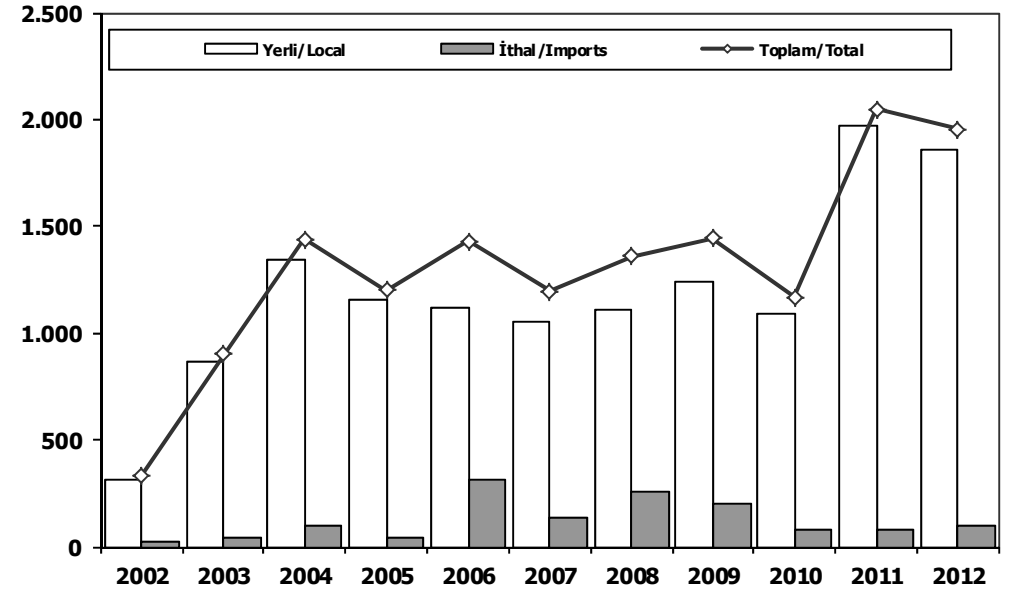
HCV Market (2002-2012 January-October)



	2002	2003	2004	2005	2006	2007	2008	2009	2010	2011	2012
Yerli/Local	9.364	16.722	27.598	29.325	28.706	22.448	21.105	11.465	15.932	26.209	22.570
İthal/Imports	2.502	6.196	6.393	6.820	8.991	8.142	7.177	3.575	6.518	10.310	8.262
Toplam/Total	11.866	22.918	33.991	36.145	37.697	30.590	28.282	15.040	22.450	36.519	30.832
İthalat/Imports (%)	21	27	19	19	24	27	25	24	29	28	27

Otobüs Pazarı (2002-2012 Ocak-Ekim)

Bus Market (2002-2012 January-October)

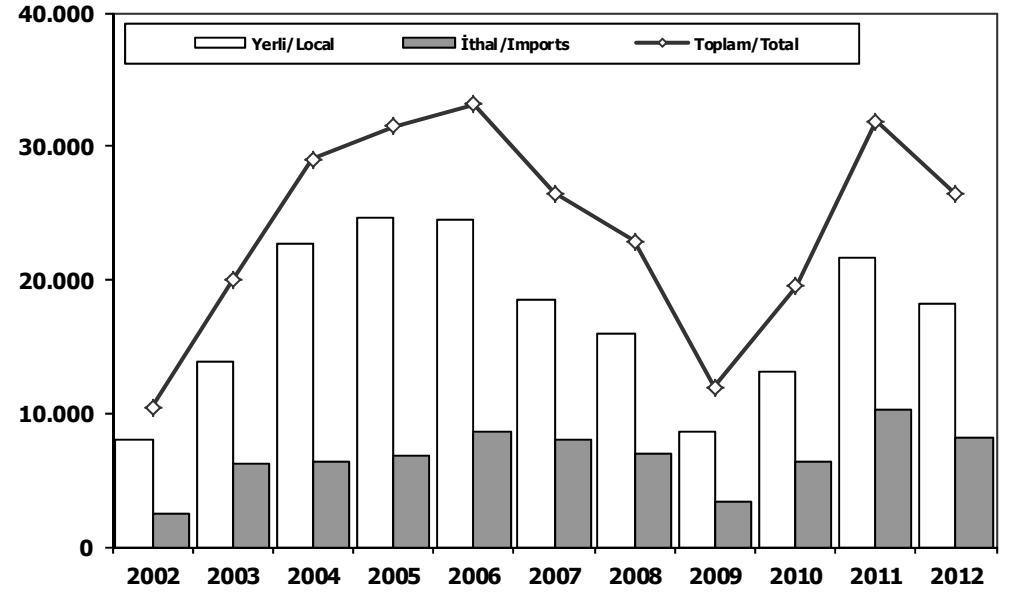
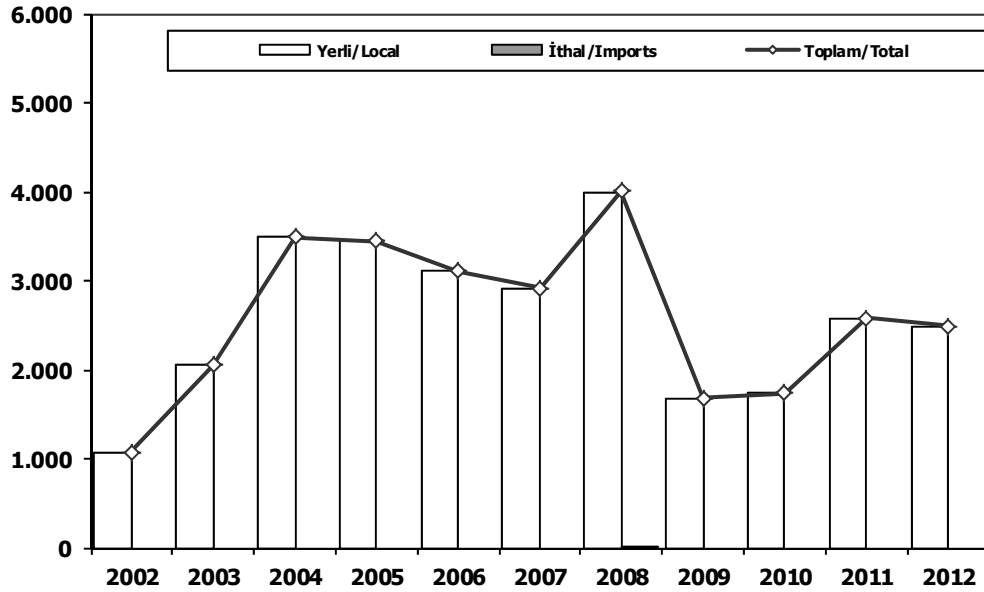


	2002	2003	2004	2005	2006	2007	2008	2009	2010	2011	2012
Yerli/Local	314	862	1.341	1.160	1.119	1.057	1.108	1.243	1.090	1.973	1.854
İthal/Imports	19	40	98	42	312	137	254	202	78	75	99
Toplam/Total	333	902	1.439	1.202	1.431	1.194	1.362	1.445	1.168	2.048	1.953
İthalat/Imports (%)	6	4	7	3	22	11	19	14	7	4	5



Midibüs Pazarı (2002-2012 Ocak-Ekim) (7-9 mt / 25-35 Kişilik)
Midibus (2002-2012 January-October) Market (7-9 mt / 25-35 Passengers)

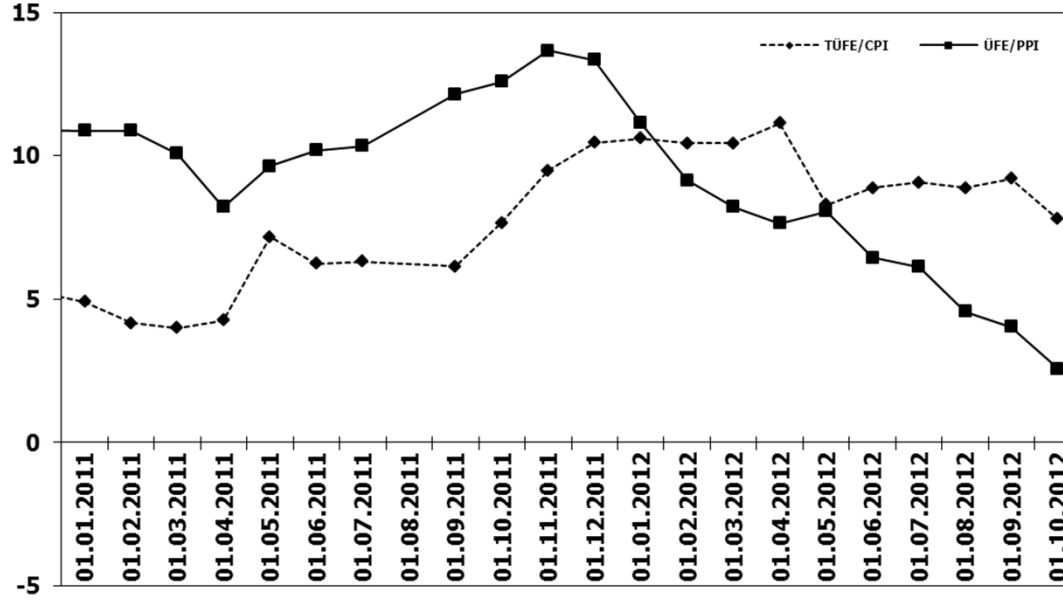
Kamyon Pazarı (2002-2012 Ocak-Ekim)
Truck Market (2002-2012 January-October)



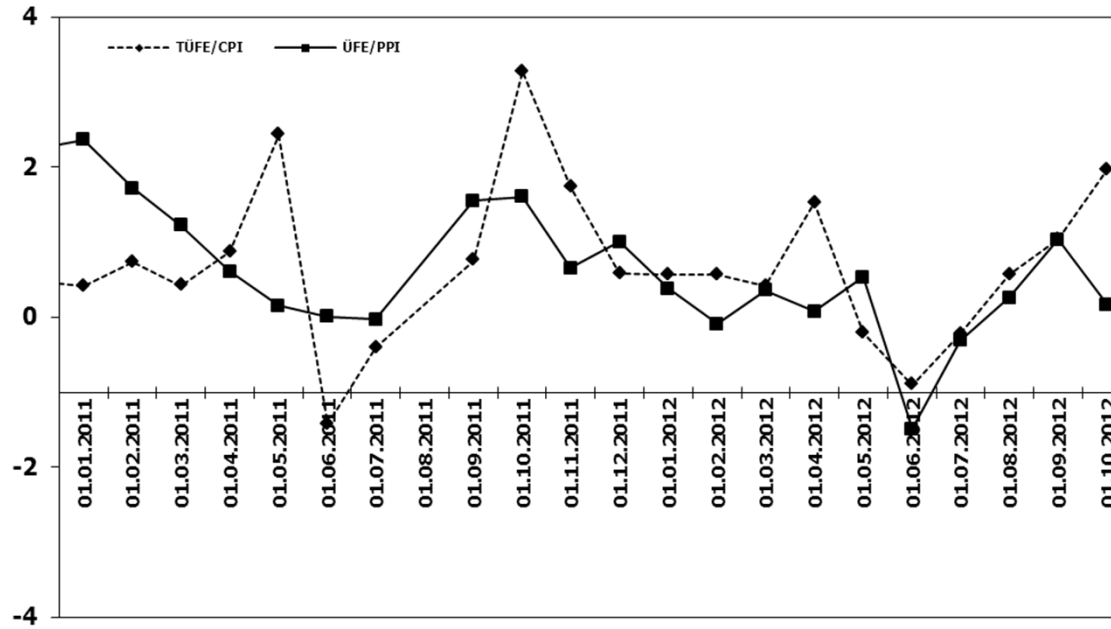
	2002	2003	2004	2005	2006	2007	2008	2009	2010	2011	2012
Yerli/Local	1.074	2.046	3.493	3.449	3.103	2.913	3.995	1.676	1.733	2.574	2.494
İthal/Imports	0	0	0	0	0	0	11	0	0	0	0
Toplam/Total	1.074	2.046	3.493	3.449	3.103	2.913	4.006	1.676	1.733	2.574	2.494
İthalat/Imports (%)	0	0	0	0	0	0	0	0	0	0	0

	2002	2003	2004	2005	2006	2007	2008	2009	2010	2011	2012
Yerli/Local	7.976	13.814	22.764	24.716	24.484	18.478	16.002	8.546	13.109	21.662	18.222
İthal/Imports	2.483	6.156	6.295	6.778	8.679	8.005	6.912	3.373	6.440	10.235	8.163
Toplam/Total	10.459	19.970	29.059	31.494	33.163	26.483	22.914	11.919	19.549	31.897	26.385
İthalat/Imports (%)	24	31	22	22	26	30	30	28	33	32	31

TÜFE ve ÜFE'nin Yıllık Değişimi (%) CPI and PPI Yearly Changes (%)



TÜFE ve ÜFE'nin Aylık Değişimi (%) CPI and PPI Monthly Changes (%)





2012 Otomotiv Sanayii Fabrika ve Dış Satışlar
2012 Automotive Industry Factory Sales and Exports Sales

Fabrika Satışları/ Factory Sales

Tipler/Types	1	2	3	4	5	6	7	8	9	10	11	12	Total
Otomobil-Passenger Car	6.057	8.792	14.114	13.520	13.730	15.824	9.197	5.065	13.994	12.999	0	0	113.292
Ticari Araç-Commercial Vehicles	8.027	9.200	13.249	12.900	14.932	14.124	14.209	9.610	15.369	12.755	0	0	124.375
* Kamyon-Truck	1.212	1.865	2.789	2.544	2.644	2.397	2.055	1.725	2.432	1.754	0	0	21.417
* Kamyonet-Pick Up	6.014	6.470	9.322	9.233	10.881	10.264	10.829	6.773	11.606	10.008	0	0	91.400
* Midibüs-Midibus	217	219	248	270	304	267	231	206	325	199	0	0	2.486
* Minibus-Minibus	487	557	699	712	688	988	953	750	757	611	0	0	7.202
* Otobüs-Bus	97	89	191	141	415	208	141	156	249	183	0	0	1.870
Traktör-F.Tractor	2.216	2.632	3.223	3.259	3.067	2.821	2.037	1.262	1.648	1.858	0	0	24.023
Genel Toplam-Grand Total	16.300	20.624	30.586	29.679	31.729	32.769	25.443	15.937	31.011	27.612	0	0	261.690

Dış Satışlar/ Exports Sales

Tipler/Types	1	2	3	4	5	6	7	8	9	10	11	12	Total
Otomobil-Passenger Car	32.011	38.595	41.903	35.761	37.223	36.086	27.219	16.345	35.183	37.293	0	0	337.619
Ticari Araç-Commercial Vehicles	26.973	27.088	33.813	25.844	28.415	29.798	28.633	9.966	25.138	22.960	0	0	258.628
* Kamyon-Truck	169	219	311	251	217	290	219	285	297	156	0	0	2.414
* Kamyonet-Pick Up	25.333	25.236	31.222	23.841	26.680	27.685	26.865	8.857	23.379	21.045	0	0	240.143
* Midibüs-Midibus	34	62	27	111	57	162	69	125	20	245	0	0	912
* Minibus-Minibus	1.229	1.253	1.857	1.264	1.109	1.349	1.095	310	1.140	1.207	0	0	11.813
* Otobüs-Bus	208	318	396	377	352	312	385	389	302	307	0	0	3.346
Traktör-F.Tractor	794	1.414	1.401	1.554	1.684	1.414	1.396	702	1.121	1.176	0	0	12.656
Genel Toplam-Grand Total	59.778	67.097	77.117	63.159	67.322	67.298	57.248	27.013	61.442	61.429	0	0	608.903

Kaynak: OSD

2012 Yılı İthal Hafif Araç Satışları 2012 Light Vehicles Import Sales

2012 Yılı İthal Otomobil Satışları / P.Cars Imports 2012

	2011 Total	1	2	3	4	5	6	7	8	9	10	11	12	Total
VOLKSWAGEN	55.550	2.804	3.298	5.470	5.854	6.262	5.960	5.873	5.424	4.394	4.887			50.226
FORD	58.807	1.501	2.330	4.012	3.531	5.613	4.890	3.546	3.827	4.738	2.746			36.734
OPEL	52.624	1.126	1.770	4.433	3.226	5.039	4.409	4.043	3.196	4.142	4.794			36.178
DACIA	17.937	1.090	1.555	2.320	2.246	2.094	2.491	1.933	2.001	2.718	2.122			20.570
HYUNDAI	17.157	834	897	1.563	1.851	1.688	2.307	2.314	2.205	2.587	2.176			18.422
CHEVROLET	23.610	919	1.085	2.011	1.821	1.866	2.243	1.703	1.268	1.418	1.093			15.427
NISSAN	18.573	393	1.062	1.492	1.569	1.616	1.588	1.711	1.437	1.844	1.585			14.297
TOYOTA	26.450	669	861	1.353	1.499	1.522	1.402	1.636	1.463	1.992	1.757			14.154
B.M.W	15.018	415	537	1.081	951	1.403	2.293	1.173	1.394	1.369	1.025			11.641
CITROEN	14.469	454	708	1.271	1.065	1.101	1.203	1.421	1.148	1.224	1.146			10.741
AUDI	12.064	378	498	1.080	1.288	1.337	1.443	1.059	1.330	1.169	1.003			10.585
PEUGEOT	15.480	448	586	969	1.297	1.221	1.087	989	982	1.171	1.013			9.763
MERCEDES	12.630	313	523	842	689	1.068	1.279	736	1.025	1.523	753			8.751
KIA	9.714	465	628	887	831	1.206	979	957	861	1.059	824			8.697
SKODA	7.589	225	570	775	804	827	703	1.004	971	952	832			7.663
FIAT	12.002	177	401	674	736	783	586	746	614	917	710			6.344
RENAULT	7.534	220	382	879	554	345	546	614	405	469	401			4.816
SEAT	6.059	89	220	305	393	391	563	470	501	550	639			4.121
VOLVO	4.662	211	230	427	333	602	594	414	426	450	349			4.036
HONDA	5.891	280	282	281	261	205	213	199	166	193	140			2.220
SUZUKI	1.340	53	96	139	145	150	111	153	151	213	188			1.399
MINI (İngiliz)	1.735	33	54	102	156	227	230	185	113	124	116			1.340
LAND ROVER	2.139	71	136	196	116	148	126	112	113	178	136			1.332
MITSUBISHI	3.005	108	102	116	136	136	84	85	113	100	79			1.059
ALFA ROMEO	898	21	61	79	54	131	101	90	82	160	70			849
GELY	1.405	66	67	85	81	86	81	109	105	87	56			823
PROTON	1.113	125	98	108	213	60	41	34	20	9	15			723
CHERY	1.932	98	91	117	74	59	47	28	43	59	66			682
SSANGYONG	881	92	76	55	104	74	52	34	41	48	106			682
MAZDA	1.620	100	107	144	30	34	54	54	25	34	72			654
JEEP	888	0	21	56	28	80	88	57	47	67	105			549
TATA	1.024	46	35	40	55	52	52	35	61	76	65			517
SUBARU	761	29	39	41	31	46	41	47	34	35	56			399
PORSCH	443	17	31	51	42	48	41	34	18	28	24			331
LANCIA	1.78	1	12	5	15	32	29	26	26	29	21			197
SMART	60	3	10	8	6	11	25	9	0	10	1			83
JAGUAR	168	7	5	5	5	6	6	2	3	10	7			56
INFINITI	102	2	0	0	1	3	0	2	2	5	9			24
BENTLEY	10	2	0	2	1	3	0	0	3	2	3			16
FERRARI	23	2	2	0	1	1	1	3	0	2	3			15
MASERATI	24	0	1	2	1	1	3	0	2	1	1			12
ASTON MARTIN	20	0	0	1	0	1	1	1	0	1	0			5
LAMBORGHINI	6	0	1	0	0	1	0	0	0	0	0			2
CHRYSLER	47	0	0	0	0	0	0	0	0	0	0			0
DODGE	1	0	0	0	0	0	0	0	0	0	0			0
LADA	10	0	0	0	0	0	0	0	0	0	0			0
DAIHATSU	379	0	0	0	0	0	0	0	0	0	0			0
Total	414.031	13.887	19.468	33.477	32.094	37.577	37.993	33.641	31.647	36.157	31.194	0	0	307.135

2012 Yılı İthal Hafif Ticari Araç Satışları / Light Commercial Vehicles Imports 2012

	2011 Total	1	2	3	4	5	6	7	8	9	10	11	12	Total
VOLKSWAGEN	26.361	1.044	1.652	1.989	2.530	2.603	2.457	2.271	2.389	2.313	2.014			21.262
RENAULT	25.128	826	1.138	1.796	1.342	1.379	1.332	1.140	1.393	1.669	1.050			13.065
MERCEDES	8.395	383	454	723	650	679	1.005	547	1.012	1.259	682			7.394
PEUGEOT	9.968	335	480	899	831	868	686	624	871	562	609			6.765
CITROEN	9.258	189	458	521	397	755	661	469	805	690	881			5.826
FIAT	5.380	179	297	379	365	345	445	350	462	498	456			3.776
MITSUBISHI	4.640	232	194	246	220	205	169	163	104	156	182			1.871
HYUNDAI	2.557	83	83	115	144	284	212	208	210	229	267			1.835
TOYOTA	1.351	56	114	136	182	227	187	169	195	298	201			1.765
ISUZU	2.296	199	382	37	34	40	74	171	164	243	143			1.487
IVECO	1.833	52	191	147	125	146	125	103	64	180	161			1.294
NISSAN	1.746	80	104	115	87	194	116	137	111	55	55			1.054
DACIA	3.402	90	104	174	155	155	91	54	52	76	27			981
SSANGYONG	1.015	131	31	57	190	130	101	69	61	78	68			916
DFM	3.407	69	157	83	71	100	75	89	104	57	42			847
KIA	780	44	41	78	54	101	83	68	47	67	53			636
FORD	1.829	19	14	11	1	0	0	49	92	94	74			354
TATA	833	34	45	52	26	32	31	26	22	15	18			301
OPEL	1.813	25	70	128	11	2	1	5	0	1	3			246
MAZDA	228	18	31	9	17	7	54	23	11	27	2			199
CHERY	113	0	0	0	0	0	0	0	0	0	0			0
SKODA	1	0	0	0	0	0	0	0	0	0	0			0
Total	112.334	4.088	6.040	7.695	7.432	8.252	7.905	6.735	8.169	8.570	6.988	0	0	71.874